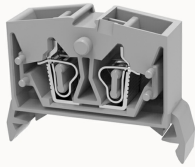


총람

제품 장점



WS2.5T-DIN35-100A(H)-11030000688

Spring-cage type Din-Rail TB, connector method: Spring-cage/plug-in connector, Rated voltage: 800 V, Rated current: 24 A, Number of connectors: 4, Number of potentials: 1, Cross section: 0.2 mm² - 2.5 mm², AWG: 28 - 12, Width: 10 mm, Color: gray, Mounting type: NS 35/7.5, NS 35/15

제품 장점

- ☑ spring-cage connection technology, good anti-vibration performance;
- ☑ Use an ordinary flat-blade screwdriver, you can easily wire and take the wire;
- ☑ Can be matched with marker strips to avoid incorrect insertion of wires.

제품 인증



기술 데이터

제품 도면

3D

□

Wiring data

| | |
|-----------------------------------|------------------------|
| Strip length | 8~9mm |
| Conductor cross section solid | 0.2~2.5mm ² |
| Conductor cross section flexible | 0.2~2.5mm ² |
| Conductor cross section solid AWG | 28~14 |

Environmental conditions

| | |
|---------------------------------------|---|
| Ambient temperature (operation) | -40 °C ~ 105 °C (depending on derating curve) |
| Relative humidity (storage/transport) | 25%~75% |

IEC Electrical parameters

| | |
|-------------------------|------|
| Rated voltage (III / 3) | 800V |
| Rated current (III / 3) | 24A |
| Rated surge voltage | 8KV |

Environmental protection

| | |
|------------|---------------------------------|
| REACH SVHC | Lead 7439-92-1 |
| RoHS | No excessive harmful substances |

Dimension

| | |
|-----------------|---------|
| End plate width | 4mm |
| length | 37.7mm |
| width | 10mm |
| Height | 28.60mm |

Overview

| | |
|---|-----------------------------|
| Connection type | Pull back spring connection |
| Number of rows | 1 |
| number of connections | 4 |
| Open-end side panels | Yes |
| Insulation Materials | PA |
| Flame retardant grade, in line with UL 94 | V0 |

악세사리

Marker

| | |
|----------------|-----|
| Top marker | ZW5 |
| Side marker | / |
| Marker support | / |
| Warning cover | / |

Accessories

| | |
|--|----------------|
| Slotted screwdriver size (Blade thickness x Width) | 0.5×3.5 |
| Adjacent jumper (2P) | / |
| Alternate jumper (2P) | / |
| Staggered jumper (2P) | / |
| End cover | D-WS2.5-MID-CO |

Installation

| | |
|-------------------------------|---------------------------------------|
| End clamp | E-WS N / E-PC-1100A |
| Terminal strip marker support | KLM3-20x8 / KLM3-44x8 / DBE-1 / DBE-2 |
| DIN rail | NS35/7.5-1000-00A(H) |

비즈니스 데이터

| | |
|---------------|-------------|
| 발주 번호 | 11030000688 |
| 포장 단위 | 50 |
| MOQ | 50 |
| 제품 무게 (포장 제외) | 6.307 |