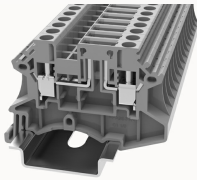


총람

제품 장점



DC4-TG-11020000186

Screw type Din-Rail TB, connector method: Screw/plug-in connector, Rated voltage: 500 V, Rated current: 20 A, Number of connectors: 2, Number of potentials: 1, Cross section: 0.5 mm² - 4mm², AWG: 22 - 10, Width: 6.1 mm, Color: gray, Mounting type: NS 35/7.5, NS 35/15

제품 장점

- ☑ Disconnect terminal blocks;
- ☑ Steel screw connection technology, reliable connection;
- ☑ Equipped with dual-channel bridge wells, circuit connection testing is more flexible;
- ☑ Unique plug-in bridge, high circuit connection efficiency;
- ☑ The box has a baffle to prevent mis-insertion;
- ☑ Can be matched with marker strips to avoid incorrect insertion of wires.

제품 인증



기술 데이터

제품 도면

3D

□

Wiring data

Screw type	Slotted screw
2 flexible conductors with a TWIN ferrule	0.5-1.5mm ²
Conductor cross section flexible (ferrule with plastic sleeve)	0.5-2.5mm ²
Conductor cross section flexible (ferrule without plastic sleeve)	0.5-4mm ²
Strip length	8~9mm
Conductor cross section solid	0.5~6mm ²

Conductor cross section flexible	0.5~4mm ²
Conductor cross section solid AWG	22~10
screw thread	M3
Tightening torque	0.6N.m

Environmental conditions

Ambient temperature (operation)	-40 °C ~ 105 °C (depending on derating curve)
Relative humidity (storage/transport)	25%~75%

UL Electrical parameters

Rated current	16A
---------------	-----

IEC Electrical parameters

Rated voltage (III / 3)	500V
Rated surge voltage	6KV

Environmental protection

REACH SVHC	Lead 7439-92-1
RoHS	No excessive harmful substances

Dimension

NS 35/7,5 Height	41.5mm
End plate width	1.5mm
NS 35/15 Height	49mm
length	56.8mm
width	6.1mm
Height	40mm

Overview

Connection method	screw connection
Number of rows	1

number of connections	2
Open-end side panels	Yes
Insulation Materials	PA
Flame retardant grade, in line with UL 94	V0

악세사리

Marker

Top marker	/
Side marker	ZB6
Marker support	/

Accessories

Slotted screwdriver size (Blade thickness x Width)	0.6×3.5
Bridge	DFA4
End cover	D-DC4-TG
Partition plate	/

Installation

End clamp	E-WS N / E-PC-1100A
Terminal strip marker support	KLM3-20x8 / KLM3-44x8 / DLM2 / DBE-1 / DBE-2
DIN rail	NS35/7.5 & NS35/15

비즈니스 데이터

발주 번호	11020000186
포장 단위	50
MOQ	50

제품 무게 (포장 제외)	8.92
---------------	------