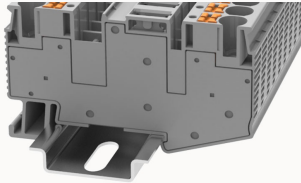


총람

제품 장점



DS6-TG-11040000204

Disconnect terminal blocks, connector method: Push-in connector, Rated voltage : 500 V, Rated current : 20 A, Number of connectors: 2, Number of potentials: 1, Cross section: 0.2 mm² - 10 mm², AWG: 20 - 8, Width: 8.2 mm, Color: gray, Mounting type: NS35/7.5, NS35/15

제품 장점

- ☑ Disconnect terminal blocks.
- ☑ Push-in connection technology, tool-free operation, more convenient and faster;
- ☑ With orange wire button, one word or cross screwdriver can release wire.
- ☑ The circuit can be disconnected, measured, controlled easily by operate the knife disconnecter.
- ☑ Equipped with test holes on both sides of the breaking point, convenient for testing the circuit.
- ☑ Snap-on knife disconnecter to prevent accidental disconnection.
- ☑ Universal breaking area to achieve different functions, can insert breaking plug, component plug, fuse plug.

제품 인증



기술 데이터

제품 도면

3D



Wiring data

Strip length	10~12mm
Conductor cross section solid	0.5~10mm ²
Conductor cross section flexible	0.5~6mm ²
Conductor cross section solid AWG	20~8

Environmental conditions

Ambient temperature (operation)	-40 °C ~ 105 °C (depending on derating curve)
---------------------------------	---

Relative humidity (storage/transport)	25%~75%
---------------------------------------	---------

IEC Electrical parameters

Rated voltage (III / 3)	500V
Rated surge voltage	6KV

Environmental protection

REACH SVHC	Lead 7439-92-1
RoHS	No excessive harmful substances

Dimension

NS 35/7,5 Height	43.5mm
NS 35/15 Height	51mm
length	74.2mm
width	8.2mm
Height	36mm

Overview

Connection type	In line connection
Number of rows	1
number of connections	2
Open-end side panels	no
Insulation Materials	PA
Flame retardant grade, in line with UL 94	V0

악세사리

Marker

Top marker	ZSF8
Side marker	ZSF8

Marker support	/
----------------	---

Accessories

Slotted screwdriver size (Blade thickness x Width) mm	0.8x4
Bridge	DFBXX-8.2
End cover	/
Matching accessories	DS-DI / DS-CO / DS-FU5 / DS-FU5-LD24

Installation

End clamp	E-WS N / E-PC-1100A
Terminal strip marker support	KLM3-20x8 / KLM3-44x8 / DBE-1 / DBE-2
DIN rail	NS35/7.5-1000-00A(H)

비즈니스 데이터

발주 번호	11040000204
포장 단위	50
MOQ	50
제품 무게 (포장 제외)	20.52