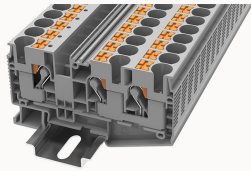


총람

제품 장점



DS10-TW-11040000148

Push-in Din-Rail TB, connector method: Push-in connector, Rated voltage : 1000 V, Rated current : 57 A, Number of connectors: 3, Number of potentials: 1, Cross section: 0.5 mm² - 16 mm², AWG: 20 - 6, Width: 10.2 mm, Color: gray, Mounting type: NS35/7.5, NS35/15

제품 장점

- ☑ Push-in connection technology, tool-free operation, more convenient and faster;
- ☑ With orange wire button, one word or cross screwdriver can release wire.
- ☑ Equipped with dual-channel bridge wells, circuit connection testing is more flexible.
- ☑ Unique plug-in bridge, high circuit connection efficiency.
- ☑ Optional marker to avoid wire mis-inserting.
- ☑ Equipped with test holes for easy testing of the circuit.

제품 인증



기술 데이터

제품 도면

3D



Wiring data

Strip length	16~18mm
Conductor cross section solid	0.5~16mm ²
Conductor cross section flexible	0.5~10mm ²
Conductor cross section solid AWG	20~6

Environmental conditions

Ambient temperature (operation)	-40 °C ~ 105 °C (depending on derating curve)
---------------------------------	---

Relative humidity (storage/transport)	25%~75%
---------------------------------------	---------

IEC Electrical parameters

Rated voltage (III / 3)	1000V
Rated current (III / 3)	57A
Rated surge voltage	8KV

Environmental protection

REACH SVHC	Lead 7439-92-1
RoHS	No excessive harmful substances

Dimension

NS 35/7,5 Height	51.1mm
End plate width	2.2mm
NS 35/15 Height	58.6mm
width	10.2mm

Overview

Connection type	In line connection
Number of rows	1
number of connections	3
Open-end side panels	Yes
Insulation Materials	PA
Flame retardant grade, in line with UL 94	V0

악세사리

Marker

Top marker	ZB10 / ZS10
Side marker	ZSF10

Marker support	DTH5-25x5 / DTH5-25x12
Accessories	
Slotted screwdriver size (Blade thickness x Width) mm	1x5.5
Bridge	DFBXX-10.2
End cover	D-DS10-TW
Installation	
End clamp	E-WS N / E-PC-1100A
Terminal strip marker support	KLM3-20x8 / KLM3-44x8 / DBE-1 / DBE-2
DIN rail	NS35/7.5-1000-00A(H)

비즈니스 데이터	
발주 번호	11040000148
포장 단위	25
MOQ	25
제품 무게 (포장 제외)	36