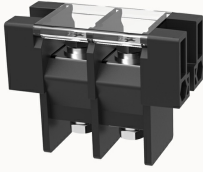


## 총람

### 제품 장점



## DG100-A-12050000227

Up and down transfer terminal, nominal current: 100A. Rated voltage (UL): 600V, rated cross section: 10~2AWG, needle pitch: 21mm, color: black, contact surface: tin

### 제품 장점

- ☒ Screw connection for worldwide use
- ☒ Barrier wiring structure, stable and reliable connection
- ☒ It can meet the high current electrical connection at the power end

### 제품 인증



## 기술 데이터

### 제품 도면

### 3D

□

### Wiring capacity

torque	5N.m
Connectable conductor cross section	10~2AWG

### Device properties

spacing	21mm
---------	------

### Electrical parameters UL

Rated voltage (B)	600V
Rated voltage (C)	600V
Rated voltage (D)	600V

Rated current (B)	100A
Rated current (D)	5A
Rated current (C)	100A

Item properties

Type of installation	panel
Pin arrangement	Single row in a straight line
Connection method	Screw connection
Screwdriver	Phillips screwdriver
screw thread	M6
Number of potentials	2
Pluggable or not	no
Number of rows	1

Material data

Environmental items	Compliant with REACH/RoHS
Contact material	copper
Contact point metal surface	Nickel plating
Insulation Materials	PBT
Insulating material group	IIIa
Flammability rating	UL94V-0

Mechanical tests

Test Specification	UL1059
--------------------	--------

Environmental data

Ambient temperature (operation)	-40℃~120℃
---------------------------------	-----------

비즈니스 데이터	
발주 번호	12050000227
포장 단위	30
MOQ	/
제품 무게 (포장 제외)	113.6