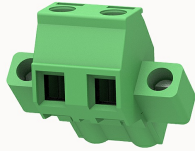


## 총람

### 제품 장점



## 2EDGKLM-7.62-10010003699

Pluggable terminal blocks, Rated current: 12A. Rated voltage  
(III/2) : 630V, pitch: 7.62mm, Color: green, Contact surface : Tin

### 제품 장점

- ☒ Adapt to multi-type sockets, device design is highly flexible
- ☒ Keying parts can be installed
- ☒ Universal installation method, suitable for various situations

### 제품 인증



## 기술 데이터

### 제품 도면

#### 3D

□

### Connection capacity

Conductor cross section solid	0.2~2.5mm <sup>2</sup>
Conductor cross section flexible	0.2~2.5mm <sup>2</sup>
AWG	24~12AWG
Torque	0.5N.m
Strip length	10mm

### Electrical parameters UL

Rated voltage (B)	300V
Rated voltage (D)	300V
Rated current (B)	10A

Rated current (D)	10A
-------------------	-----

#### Electrical parameters IEC

Rated voltage	630V
Rated current(III/3)	400V
Rated current	12A
Rated current(III/2)	630V
Rated current(II/2)	1000V
Rated surge voltage(III/3)	6KV
Rated surge voltage(III/2)	6KV
Rated surge voltage(II/2)	6KV

#### Item properties

Connection direction	45°
Type of installation	panel
Pin arrangement	Single row in a straight line
Connection method	Screw connection
Screwdriver	Slotted screwdriver
screw thread	M3
Pitch	7.62mm
Number of potentials	2
Pluggable or not	Yes
Number of rows	1

#### Material data

Environmental items	Compliant with REACH/RoHS
Contact material	Copper alloy
Contact point metal surface	tin-plated

Contact zone metal surface	tin-plated
Insulation Materials	PA66
Insulating material group	I
Flammability rating	UL94V-0

Mechanical tests

Test Specification	IEC61984/ UL1059
--------------------	------------------

Environmental data

Ambient temperature (operation)	-40℃~105℃
---------------------------------	-----------

악세사리

Tool

Screwdriver	0.6x3.5, Slotted screwdriver
Operating tool	/

Accessories

Coding strip	2EDG-PWI
Bridge	/
Marking strip	/
Others	/

비즈니스 데이터

발주 번호	10010003699
포장 단위	120
MOQ	30
제품 무게 (포장 제외)	4.5