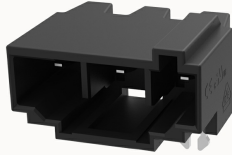


## 총람

### 제품 장점



## 9EDGRC-7.5-10020001602

Pluggable terminal blocks, Rated current: 20A, Rated voltage  
(III/2) : 630V, pitch: 7.5mm, Color: black, Contact surface : Tin

### 제품 장점

- ☒ Universal installation method to ensure a high degree of flexibility in device design
- ☒ The plug direction is parallel to the PCB
- ☒ Fixed pin structure, firmer PCB installation

### 제품 인증



## 기술 데이터

### 제품 도면

### 3D

□

### Processing notes

Process

Wave soldering/manual soldering

### Electrical parameters UL

Rated voltage (B)	300V
Rated voltage (C)	300V
Rated voltage (D)	600V
Rated current (B)	16A
Rated current (D)	5A
Rated current (C)	16A

### Electrical parameters IEC

Rated voltage	630V
Rated current(III/3)	500V
Rated current	20A
Rated current(III/2)	630V
Rated current(II/2)	1000V
Rated surge voltage(III/3)	6KV
Rated surge voltage(III/2)	6KV
Rated surge voltage(II/2)	6KV

Item properties

Connection direction	0°
Type of installation	PCB welding
Pin arrangement	Single row in a straight line
Pitch	7.5mm
Number of potentials	3
Pluggable or not	Yes
Number of rows	1

Material data

Environmental items	Compliant with REACH/RoHS
Contact material	copper
Contact zone metal surface	Gold plate
Insulation Materials	High temperature resistant materials
Insulating material group	IIIa
Flammability rating	UL94V-0

Mechanical tests

Test Specification	IEC61984/ UL1059
--------------------	------------------

Environmental data	
Ambient temperature (operation)	-40℃~130℃

악세사리	
Tool	
Screwdriver	/
Operating tool	/
Accessories	
Coding strip	/
Bridge	/
Marking strip	/
Others	/

비즈니스 데이터	
발주 번호	10020001602
포장 단위	630
MOQ	30
제품 무게 (포장 제외)	3.274