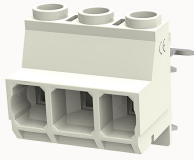


총람

제품 장점



DG636RF-7.5-10040000761

PCB terminal blocks, Rated current: 24A, Rated voltage (III/2) 630V, Cross section: 0.2~2.5mm², pitch: 7.5mm, connector method: Screw connector with tension sleeve, Color: green, Contact surface : Tin

제품 장점

- ☒ Fixed screw connection technology, safe and reliable
- ☒ Universal installation method to ensure a high degree of flexibility in device design

제품 인증



기술 데이터

제품 도면

3D

□

Processing notes

Process

Wave soldering/manual soldering

Connection capacity

Conductor cross section solid	0.2~2.5mm ²
Conductor cross section flexible	0.2~2.5mm ²
AWG	30~12AWG
Torque	0.6N.m
Strip length	8mm

Electrical parameters UL

Rated voltage (B)	300V
Rated voltage (C)	300V
Rated voltage (D)	600V
Rated current (B)	20A
Rated current (D)	5A
Rated current (C)	20A

Electrical parameters IEC

Rated voltage	630V
Rated current(III/3)	600V
Rated current	24A
Rated current(III/2)	630V
Rated current(II/2)	1000V
Rated surge voltage(III/3)	6KV
Rated surge voltage(III/2)	6KV
Rated surge voltage(II/2)	6KV

Item properties

Connection direction	0°
Type of installation	PCB welding
Pin arrangement	Single row in a straight line
Connection method	Screw connection
Screwdriver	Slotted screwdriver
screw thread	M3
Pitch	7.5mm
Number of potentials	3
Pluggable or not	no

Number of rows	1
----------------	---

Material data

Environmental items	Compliant with REACH/RoHS
Contact material	Copper alloy
Contact point metal surface	tin-plated
Insulation Materials	PA66
Insulating material group	I
Flammability rating	UL94V-0

Mechanical tests

Test Specification	IEC60947/UL1059
--------------------	-----------------

Environmental data

Ambient temperature (operation)	-40℃~105℃
---------------------------------	-----------

악세사리

Tool

Screwdriver	0.6x3.5mm, Slotted screwdriver
Operating tool	/

Accessories

Coding strip	/
Bridge	/
Marking strip	/
Others	/

비즈니스 데이터

발주 번호	10040000761
-------	-------------

포장 단위	50
MOQ	30
제품 무게 (포장 제외)	7.2