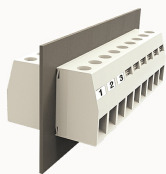


총람

제품 장점



DGH50-10090000013

Through-wall terminal blocks, Rated current: 150A. Rated voltage (III/2) : 1000V, Width: 18.8mm, Color: gray, Contact surface : Tin

제품 장점

- ☒ Screw connection technology, safe and reliable
- ☒ Through-wall installation, free positioning

제품 인증

기술 데이터

제품 도면

3D

□

Connection capacity

Conductor cross section solid	16~50mm ²
Conductor cross section flexible	16~50mm ²
AWG	6~2/0AWG
Strip length	24mm

Electrical parameters UL

Rated voltage (B)	600V
Rated voltage (C)	600V
Rated voltage (D)	600V
Rated current (B)	170A
Rated current (D)	5A

Rated current (C)	170A
-------------------	------

Electrical parameters IEC

Rated current(III/3)	690V
Rated current	500V
	150A
Rated current(III/2)	1000V
Rated current(II/2)	1000V
Rated surge voltage(III/3)	8KV
Rated surge voltage(III/2)	8KV
Rated surge voltage(II/2)	8KV

Item properties

Type of installation	panel
Connection method	Screw connection
Screwdriver	Slotted screwdriver
screw thread	M6
Pitch	18.8mm
Number of potentials	1
Pluggable or not	Yes
Number of rows	1

Material data

Environmental items	Compliant with REACH/RoHS
Contact material	copper
Contact point metal surface	tin-plated
Contact zone metal surface	tin-plated
Insulation Materials	PA66

Insulating material group	I
Flammability rating	UL94V-0
Mechanical tests	
Test Specification	IEC60947/UL1059
Environmental data	
Ambient temperature (operation)	-40℃~105℃

악세서리	
Accessories	
Coding strip	/
Bridge	/
Marking strip	/
Others	/
Tool	
Operating tool	/
Screwdriver	/

비즈니스 데이터	
발주 번호	10090000013
포장 단위	20
MOQ	30
제품 무게 (포장 제외)	120