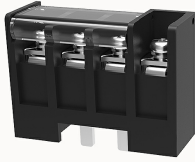


총람

제품 장점



DG1450H-B-20A(H)-12010000014

Single-layer PCB barrier terminal blocks, Rated current: 57A. Rated voltage (UL) : 600V, Cross section: 22~8AWG, pitch: 14.5mm, Color: black, Contact surface: Tin

제품 장점

- ☒ Screw connection for worldwide use
- ☒ Fence type wiring structure, stable and reliable connection
- ☒ High current electrical connections at the power end can be met

제품 인증



기술 데이터

제품 도면

3D

□

Processing notes

Process	Wave soldering/manual soldering
---------	---------------------------------

Connection capacity

Conductor cross section solid	0.5~16mm ²
Conductor cross section flexible	0.5~16mm ²
AWG	22~6AWG

Electrical parameters UL

Rated voltage (B)	600V
Rated voltage (C)	600V

Rated voltage (D)	600V
Rated current (B)	57A
Rated current (D)	5A
Rated current (C)	57A

Electrical parameters IEC

Rated current	1000V
	57A

Item properties

Type of installation	PCB welding
Pin arrangement	Single row in a straight line
Connection method	Screw connection
Screwdriver	slotted-phillips screwdriver
screw thread	M5
Pitch	14.5mm
Number of potentials	4
Pluggable or not	no
Number of rows	1

Material data

Environmental items	Compliant with REACH/RoHS
Contact material	Copper alloy
Contact point metal surface	tin-plated
Insulation Materials	PBT
Insulating material group	IIIa
Flammability rating	UL94V-0

Mechanical tests

Test Specification	UL1059
Environmental data	
Ambient temperature (operation)	-40℃~125℃

악세서리	
Accessories	

비즈니스 데이터	
발주 번호	12010000014
포장 단위	15
MOQ	/
제품 무게 (포장 제외)	85.9