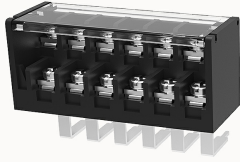


## 총람

### 제품 장점



### DG24-3-B-12060000029

Double-layer barrier terminal blocks, Rated current: 15A. Rated voltage (UL) : 300V, Cross section: 22~14AWG, pitch: 7.62mm, Color: black, Contact surface: Tin

### 제품 장점

- ☒ Screw connection for worldwide use
- ☒ Fence type wiring structure, stable and reliable connection
- ☒ Used in industrial control field to save equipment installation space

### 제품 인증

## 기술 데이터

### 제품 도면

### 3D

□

### Processing notes

Process	Wave soldering/manual soldering
---------	---------------------------------

### Connection capacity

AWG	22~14AWG
Torque	0.5N.m

### Electrical parameters UL

Rated voltage (B)	300V
Rated voltage (D)	300V
Rated current (B)	15A
Rated current (D)	10A

### Item properties

Type of installation	PCB welding
Pin arrangement	Double-row of misalignment
Connection method	Screw connection
Screwdriver	slotted-phillips screwdriver
screw thread	M3
Pitch	7.62mm
Number of potentials	12
Pluggable or not	no
Number of rows	2

Material data

Environmental items	Compliant with REACH/RoHS
Contact material	Copper alloy
Contact point metal surface	tin-plated
Insulation Materials	PA66
Insulating material group	II
Flammability rating	UL94V-0

Mechanical tests

Test Specification	UL1059
--------------------	--------

Environmental data

Ambient temperature (operation)	-40℃~105℃
---------------------------------	-----------

악세사리

Accessories

--	--

발주 번호	12060000029
포장 단위	80
MOQ	/
제품 무게 (포장 제외)	40.8