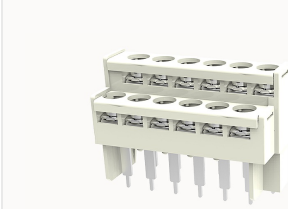


총람

제품 장점



DG24-4-12060000031

Double-layer barrier terminal blocks, Rated current: 8A. Rated voltage (UL) : 300V, Cross section: 24~14AWG, pitch: 7.62mm, Color: gray, Contact surface: Tin

제품 장점

- ☒ Screw connection for worldwide use
- ☒ Fence type wiring structure, stable and reliable connection
- ☒ Used in industrial control field to save equipment installation space

제품 인증

기술 데이터

제품 도면

3D

□

Processing notes

Process	Wave soldering/manual soldering
---------	---------------------------------

Connection capacity

AWG	22~14AWG
Torque	0.5N.m

Electrical parameters UL

Rated voltage (B)	300V
Rated voltage (D)	300V
Rated current (B)	8A
Rated current (D)	8A

Item properties

Type of installation	PCB welding
Pin arrangement	Double-row of misalignment
Connection method	Screw connection
Screwdriver	slotted-phillips screwdriver
screw thread	M3
Pitch	7.62mm
Number of potentials	12
Pluggable or not	no
Number of rows	2

Material data

Environmental items	Compliant with REACH/RoHS
Contact material	Copper alloy
Contact point metal surface	tin-plated
Insulation Materials	PBT
Insulating material group	IIIa
Flammability rating	UL94V-0

Mechanical tests

Test Specification	UL1059
--------------------	--------

Environmental data

Ambient temperature (operation)	-40℃~125℃
---------------------------------	-----------

악세사리

Accessories

--	--

발주 번호	12060000031
포장 단위	60
MOQ	/
제품 무게 (포장 제외)	33.8