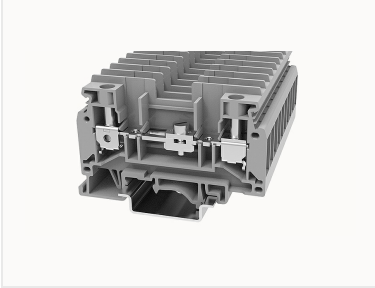


총람

제품 장점



DCTK6-11060000212

Screw type Din-Rail TB, connector method: Screw/plug-in connector, Rated voltage: 630 V, Rated current: 41 A, Number of connectors: 2, Number of potentials: 1, Cross section: 0.5 mm² - 6 mm², AWG: 22 - 8, Width: 8 mm, Color: gray, Mounting type: NS 35/7.5, NS 35/15

제품 장점

- ☑Current terminal;
- ☑Steel screw connection technology, reliable connection;
- ☑The sliding block breaks, which can realize the circuit breaking function;
- ☑The box has a baffle to prevent mis-insertion;
- ☑Can be matched with marker strips to avoid incorrect insertion of wires.

제품 인증



기술 데이터

제품 도면

3D

□

Wiring data

Screw type	Slotted screw
Strip length	10~11mm
Conductor cross section solid	0.5~6mm ²
Conductor cross section flexible	0.5~6mm ²
Conductor cross section solid AWG	22~8
screw thread	M4
Tightening torque	1.2N.m

Environmental conditions

Ambient temperature (operation)	-40 °C ~ 105 °C (depending on derating curve)
Relative humidity (storage/transport)	25%~75%

UL Electrical parameters

Rated current	45A
---------------	-----

IEC Electrical parameters

Rated voltage (III / 3)	630V
Rated current (III / 3)	41A
Rated surge voltage	8KV

Environmental protection

REACH SVHC	Lead 7439-92-1
RoHS	No excessive harmful substances

Dimension

NS 35/7,5 Height	46.55mm
End plate width	1.5mm
NS 35/15 Height	54.05mm
length	70.9mm
width	8mm
Height	46.1mm

Overview

Connection method	screw connection
Number of rows	1
number of connections	2
Open-end side panels	Yes
Insulation Materials	PA

Flame retardant grade, in line with UL 94

V0

약세사리

Marker

Top marker	/
Side marker	ZB8
Marker support	/

Accessories

Slotted screwdriver size (Blade thickness x Width)	1×4
Bridge	FBRI6-RTK/S-XXP
End cover	D-DCTK6
Partition plate	/

Installation

End clamp	E-WS N / E-PC-1100A
Terminal strip marker support	KLM3-20x8 / KLM3-44x8 / DLM2 / DBE-1 / DBE-2
DIN rail	NS35/7.5 & NS35/15

Marking & Installation

Marking strip	ZB8
Marker cards	DBE-1

Accessories

End cover	D-DCTK6
Bridge	FBRI6-RTK/S
End clamp	E-WS
DIN rail	NS35/7.5-1000-00A(H)

비즈니스 데이터	
발주 번호	11060000212
포장 단위	50
MOQ	50
제품 무게 (포장 제외)	19.027