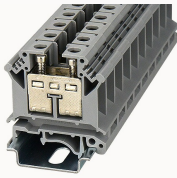


총람

제품 장점



PCIK16-11010000121

Screw type Din-Rail TB, connector method: Screw/plug-in connector, Rated voltage: 1000 V, Rated current: 76 A, Number of connectors: 2, Number of potentials: 1, Cross section: 1.0 mm² - 16 mm², AWG: 12 - 4, Width: 12.2 mm, Color: gray, Mounting type: NS 35/7.5, NS 35/15

제품 장점

- ☑ Screw connection technology, reliable connection;
- ☑ Equipped with fixed parts and bridge parts, circuit connection test is more flexible;
- ☑ Copper alloy material, good corrosion resistance;
- ☑ Can be matched with marker strips to avoid incorrect insertion of wires.

제품 인증



기술 데이터

제품 도면

3D



Wiring data

Screw type	Slotted screw
2 flexible conductors with a TWIN ferrule	0.75-10mm ²
Conductor cross section flexible (ferrule with plastic sleeve)	1-16mm ²
Conductor cross section flexible (ferrule without plastic sleeve)	1-16mm ²
Strip length	11~12mm
Conductor cross section solid	1~16mm ²
Conductor cross section flexible	1.0~16mm ²

Conductor cross section solid AWG	12~4
screw thread	M5
Tightening torque	2.0N.m

Environmental conditions

Ambient temperature (operation)	-40 °C ~ 105 °C (depending on derating curve)
Relative humidity (storage/transport)	25%~75%

IEC Electrical parameters

Rated voltage (III / 3)	1000V
Rated current (III / 3)	76A
Rated surge voltage	8KV

Environmental protection

REACH SVHC	Lead 7439-92-1
RoHS	No excessive harmful substances

Dimension

NS 35/7,5 Height	47.25mm
End plate width	1.6mm
NS 35/15 Height	54.75mm
length	42.5mm
width	12.2mm
Height	46mm

Overview

Connection method	screw connection
Number of rows	1
number of connections	2
Open-end side panels	Yes

Insulation Materials	PA
Flame retardant grade, in line with UL 94	V0

악세사리

Accessories

Slotted screwdriver size (Blade thickness x Width)	1×4
Fixed bridge	FBIXX-12
Insertion bridge	EB2-12 / EB3-12 / EB10-12
End cover	D-PC16-105A(H)
Separating disk	/
Partition plate	/

Marker

Top marker	/
Marker	ZT12
Marker support	/

Installation

End clamp	E-WS N / E-PC-1100A
Terminal strip marker support	KLM3-20x8 / KLM3-44x8 / DLM2 / DBE-1 / DBE-2
DIN rail	NS35/7.5 & NS35/15

Marking & Installation

Marking strip	ZB10
Marker cards	DBE-1

Accessories

End cover	D-PCIK16
Bridge	FBIXX-12

End clamp	E-WS
DIN rail	NS35/7.5-1000-00A(H)

비즈니스 데이터	
발주 번호	11010000121
포장 단위	50
MOQ	50
제품 무게 (포장 제외)	13.953