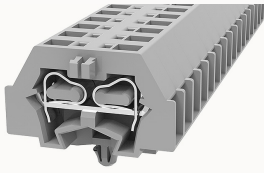


총람

제품 장점



WS2.5-DB-11A(H)-11030000133

Spring-cage type Din-Rail TB, connector method: Spring-cage/plug-in connector, Rated voltage: 800 V, Rated current: 24 A, Number of connectors: 2, Number of potentials: 1, Cross section: 0.2 mm² - 2.5 mm², AWG: 28 - 14, Width: 6 mm, Color: gray, Mounting type: Panel installation

제품 장점

- ☑ spring-cage connection technology, good anti-vibration performance;
- ☑ Use an ordinary flat-blade screwdriver, you can easily wire and take the wire;
- ☑ Panel installation, no need to install on the guide rail.

제품 인증



기술 데이터

제품 도면

3D

□

Wiring data

Strip length	8~9mm
Conductor cross section solid	0.2~2.5mm ²
Conductor cross section flexible	0.2~2.5mm ²
Conductor cross section solid AWG	28~14

Environmental conditions

Ambient temperature (operation)	-40 °C ~ 105 °C (depending on derating curve)
Relative humidity (storage/transport)	25%~75%

IEC Electrical parameters

Rated voltage (III / 3)	800V
Rated current (III / 3)	24A
Rated surge voltage	8KV

Environmental protection

REACH SVHC	Lead 7439-92-1
RoHS	No excessive harmful substances

Dimension

End plate width	2.5mm
length	28mm
width	6mm
Height	18mm

Overview

Connection type	Pull back spring connection
Number of rows	1
number of connections	2
Open-end side panels	Yes
Insulation Materials	PA
Flame retardant grade, in line with UL 94	V0

악세사리

Marker

Top marker	/
Side marker	/
Marker support	/
Warning cover	/

Accessories

Slotted screwdriver size (Blade thickness x Width)	0.5×3.5
Adjacent jumper (2P)	/
Alternate jumper (2P)	/
Staggered jumper (2P)	/
End cover	D-WS2.5-DB-12A(H)

Installation

End clamp	E-WS N / E-PC-1100A
Terminal strip marker support	KLM3-20x8 / KLM3-44x8 / DBE-1 / DBE-2
DIN rail	NS35/7.5-1000-00A(H)

Accessories

End cover	D-WS2.5-DB
Bridge	WFE-2.5

비즈니스 데이터

발주 번호	11030000133
포장 단위	200
MOQ	200
제품 무게 (포장 제외)	2.388