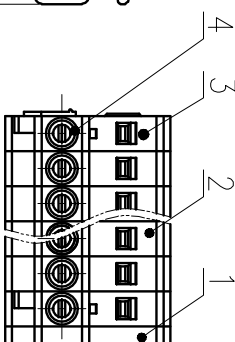
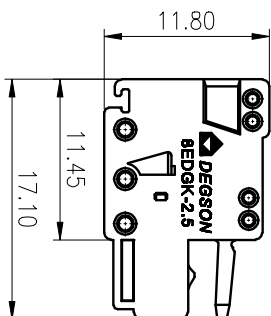
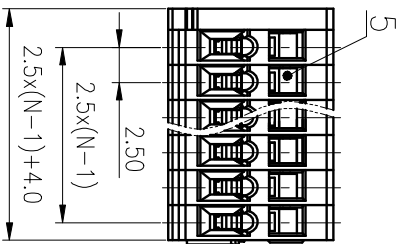
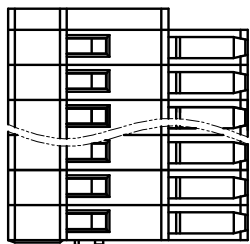


精度等级/General Tolerances(mm)		公差等级/General Tolerances(mm)										公差等级/General Tolerances(mm)		
0	>3	>6	>10	>18	>30	>50	>80	>120	>180	>250	>315	>400	>500	0.1/10
~	~	~	~	~	~	~	~	~	~	~	~	~	~	±Z
3	6	10	18	30	50	80	120	180	250	315	400	500	>500	±Z
±0.12 ±0.18 ±0.22 ±0.26 ±0.31 ±0.37 ±0.57 ±0.80 ±0.93 ±1.05 ±1.15 ±1.60 ±2.20 ±2.50														

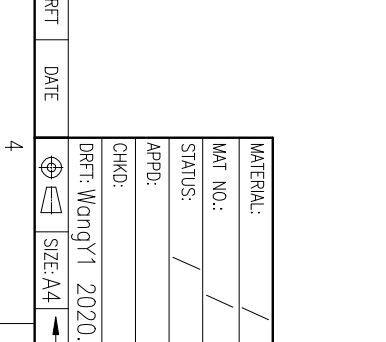
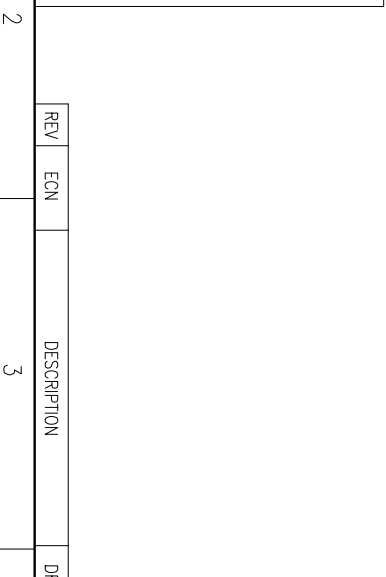
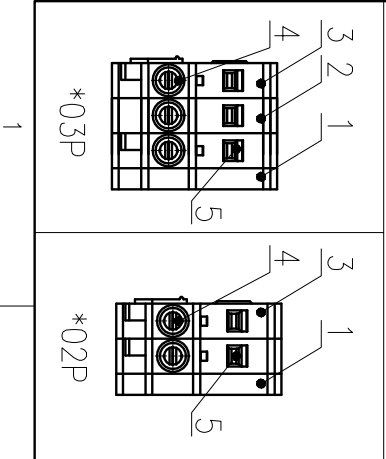


ITEM	NAME OF PART	MATERIAL	NOTES
1	Cover	PA66	UL94V-0
2	Housing1	PA66	UL94V-0
3	Housing2	PA66	UL94V-0
4	Clamp	Copper alloy	Sn plated
5	Spring	Stainless Steel	

UL 标准 / UL Standard:	B	C	D
额定电压/电涌 / Rated Voltage(V)/Current(A)	150/4	150/4	150/4
IEC 标准 / IEC Standard:			
过压类别 / Overvoltage Category / 污染等级 / Pollution Degree	III / 3	III / 2	II / 2
额定电压/电涌 / Rated Voltage(V)/Current(A)	130/6	/	/
额定脉冲电压 / Rate Impulse Voltage(KV)	2.5	/	/
线径范围(硬线和软线) / Wire Range(rigid and flexible)(mm² / AWG)	0.2~0.5 / 28~20		
间距 / Pitch(mm) / 线数范围 / Poles	2.50 / N=02~24P		
剥线长度 / Stripping length(mm)	6~7		
使用温度范围 / Operating Temperature(°C)	-40~+105		
符合 RoHS 环保要求 / Conform to RoHS	Yes		
标准颜色编号 / Standard color number:	PANTONE 428C		

MATERIAL:	/
MAT NO.:	/
STATUS:	/
APPD:	/
CHKD:	/
NAME:	8EDGK-2.5-XXP-11-01A(H)

DRAWING NO.:	8EDGK-2.5-C01
TYPE:	CUSTOMER DRAWING
SCALE:	2:1
REV	TO
1/1	1/1



MATERIAL:	/
MAT NO.:	/
STATUS:	/
APPD:	/
CHKD:	/
NAME:	8EDGK-2.5-XXP-11-01A(H)
DRAWING NO.:	8EDGK-2.5-C01
TYPE:	CUSTOMER DRAWING
SCALE:	2:1
REV	TO
1/1	1/1