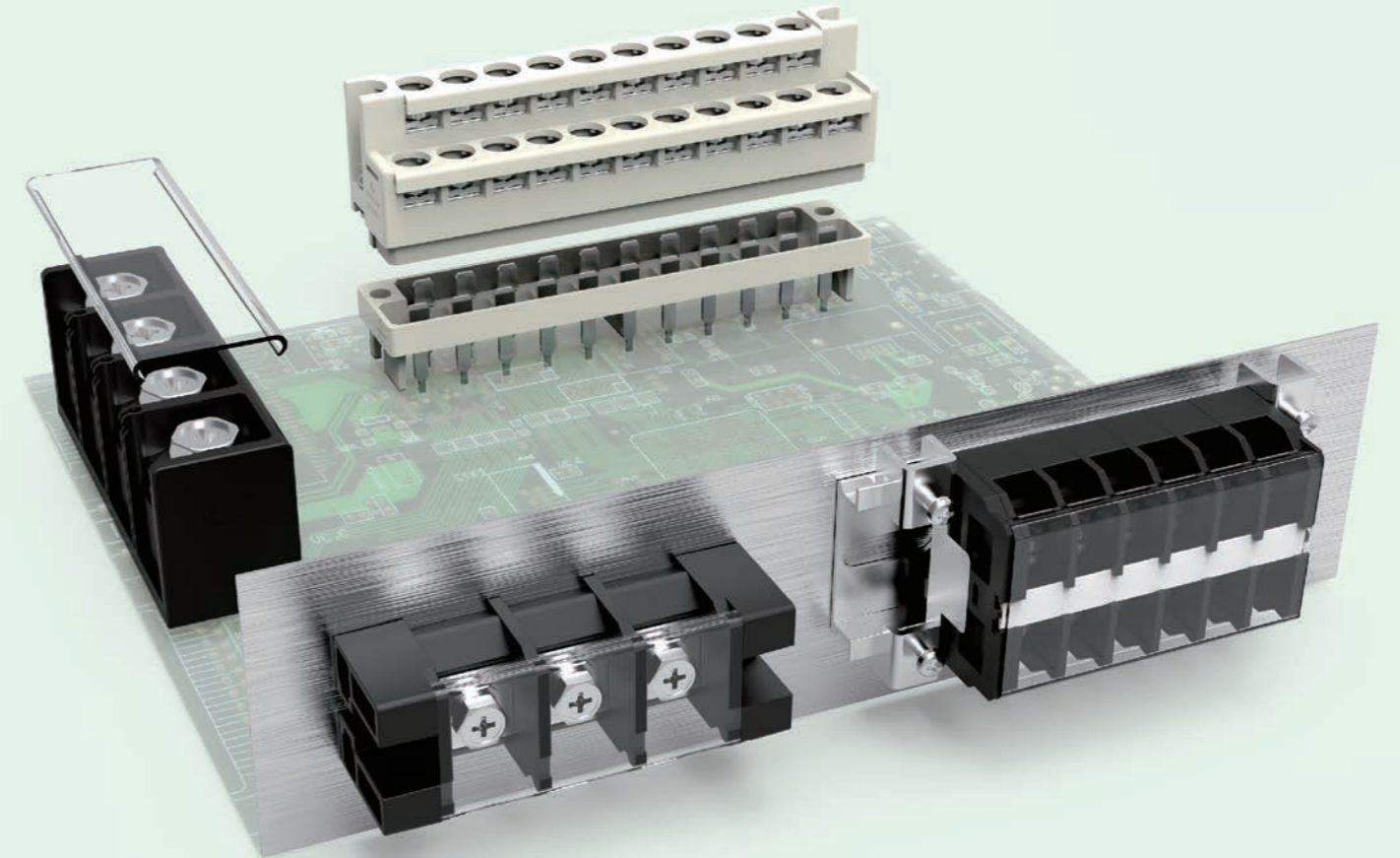




高松官网



微信公众号



高松技术有限公司
DEGSON TECHNOLOGY CO.,LTD.

地址：中国宁波慈溪市逍林大道1585号
邮编：315321

The catalog is for reference purpose only and details are
base on company's specifications

网址：www.degson.com
电话：400-885-2488
邮箱：info@degson.com

BR 24-CE01

栅栏式端子

Barrier Terminal Blocks

公司简介

DEGSON高松创建于1990年，是全球知名的工业连接器整体解决方案提供商、拥有美国UL-CTDP、德国VDE-TDAP和CNAS认证实验室，公司通过了ISO9001、ISO14001、ISO45001、ISO80079-34、ISO/TS22163和IATF16949管理体系认证，是国家高新技术企业。

DEGSON高松拥有行业深厚的模具加工、自动化制造能力，配备先进的检测仪器和专业检测技术，打造高可靠性、高耐用性产品，服务全球用户；同时，我们具有强大的定制化能力，并根据全球客户个性化需求，提供专业的定制化解决方案，为客户提供增值服务。

DEGSON高松产品畅销中国、美国、德国、英国、意大利、西班牙、土耳其、日本、韩国、新加坡等100多个国家和地区，为全球工业自动化、仪器仪表、电力电气、轨道交通、船舶、新能源、电梯、照明、安防、机械、电动两轮车等行业，提供高品质产品和服务，获得了众多世界500强和行业龙头企业的认可。

DEGSON高松以“客户第一、奋斗共赢、责任诚信、追求卓越”的核心价值观，不断整合全球专业技术资源，打造强大的研发创新、产品制造和技术应用能力，依托全球布局，提供系列化、多品种、多型号的高品质产品和服务，为全球客户提供专业、快捷的全连接应用解决方案，帮助客户持续创造价值，致力打造智慧互联世界。

Brief Introduction

Founded in 1990, DEGSON is well known as a comprehensive industrial solution provider, with UL-CTDP, VDE-TDAP and CNAS approved laboratory. DEGSON has passed ISO9001, ISO14001, ISO45001, ISO80079-34, ISO/TS22163 and IATF16949 Management System, and is a national high-tech enterprise.

DEGSON is engaged in supplying highly reliable and durable products to serve global customers. The company has a market-leading capability of mould processing, automatic manufacturing and advanced testing. DEGSON has the complete engineering ability to support global customers with the professional customization solution and value-added service.

DEGSON products are widely recognized in China, the USA, Germany, the UK, Italy, Spain, Turkey, Japan, South Korea, Singapore, etc. totally hundred countries and regions. DEGSON supply high quality products and provide professional services globally in the industry sectors likely industrial automation, instrument, electric power, railway, marine and offshore, new energy, elevator, lighting, security, machinery, E-bike industry, etc. The company won the recognition from partners among Fortune 500 and industry leading enterprises.

Based on the business philosophy of "Clients First, Win-win Strategy, Responsibility Integrity, Excellence Pursuit.", DEGSON continuously integrates professional technical resources, R&D innovation, product manufacturing and technology application capabilities. Relying on global sales network, DEGSON aims to supply series of multiple varieties of high-quality products and services. We provide global customers with professional and quick connected application solutions, help customers continue to create value. DEGSON is making contributions to creating a smart and interconnected world.



亚洲首家同时拥有美国UL、德国VDE认可的实验室 First UL & VDE Certified Laboratory in Asia

UL、VDE战略合作 Strategic cooperation with UL and VDE



① UL能源与科技全球事业部总经理来访我司
① The general manager of UL global energy & technology division visit our company



② VDE环球服务公司总裁 Sven Ohrke来我司商务洽谈战略合作
② Sven Ohrke, President of VDE global services, discusses mutual strategic cooperation in DEGSON



③ VDE实验室认可：2010年7月VDE正式向DEGSON颁发了“VDE认可实验室”证书。
UL实验室认可：2013年3月UL正式向DEGSON颁发“UL WTDP”证书。
2016年4月，UL颁发了CDTP实验室认可证书。
2016年12月，VDE颁发了TDAP实验室认可证书。
2017年1月，IRIS体系审核通过。
③ VDE Laboratory Accreditation: In July 2010, VDE issued the "VDE Authorized Laboratory" certificate to DEGSON laboratory.
UL laboratory accreditation: UL formally issued "UL WTDP" certificate to DEGSON in March 2013.
In April, 2016, UL-CTDP.
In December, 2016, VDE-TDAP.
In January, 2017, Pass IRIS system audit.



ISO9001 ISO14001 IATF16949 ISO/TS 22163 UL CTDP 实验室证书 UL - CTDP VDE TDAP 实验室证书 VDE - TDAP



CNAS EX 证书 EX certificate 10 UL证书 4000种产品型号 UL Certificates:10,Covering 4000+Products 178 VDE证书 3000种产品型号 VDE Certificates:175,Covering 3000+Products TUV 证书 TUV certificate 中国发明专利证书 Chinese invention patent

DEGSON高松全球生产基地/研发中心
DEGSON Global Production Base and R&D Center



总部工厂



越南工厂



高新区工厂



南京竞争力中心



洛阳研发中心

DEGSON高松产品销往全球100多个国家和地区
DEGSON products are very popular more than 100 countries and areas.



目录 CONTENTS

新品速递 New products list

DG35-30Z(H)/DG250-A/DG100D-A/DG200D-A.....01-02

冷压端子/铜鼻子/铝端子
Cold-Pressed Terminals/Copper Nose/Aluminum terminal03-04

通用单层PCB Single level type

DG16/DG25/DG26/DG28..... 08

DG35/DG36/DG38/DG45/DG46/DG48..... 09

DG55/DG58/DG31-B/DG65/DG66/DG66S-2-B.....10

DG66-DA/DG66-DB/DG66H-B/DG66RT/DG66VT..... 11

DG78/DG90-B/DG88/DG88RT..... 12

DG1450-B/DG1450H-B/DG1450H-B-(10A-40A)..... 13

DG1700-B/DG1716-B/DG2000-B/DG2000H-B.....14

DG2020-B/DG2020-B-10A/DG2350/DG2350H-50A.....15

双层PCB-PLC端子 Double level type

DG24-1/DG24-2/DG24-3/DG24-4/DG24-5.....17

DG24B-1/DG24B-2/DG44-1/DG44B-1.....18

栅栏转接端子 Transfer type

DG49-A/DG69-A/DG89-A/DG98-A/DG99-A.....20

DG30-A/DG40-A/DG75-A/DG100-A/DG150-A/DG200-A.....21

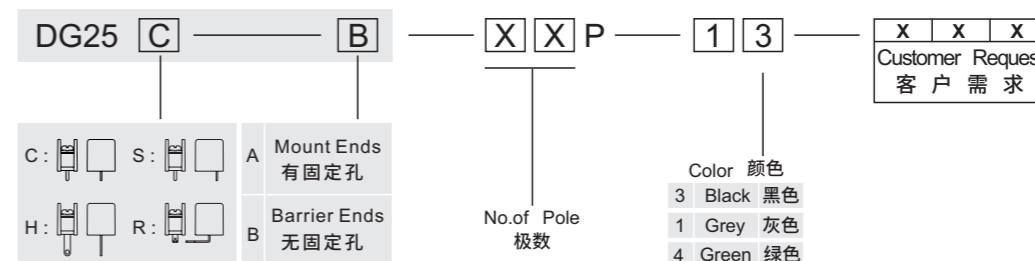
DGR10/DGR20/DGR30/DGR40/DGR60/DGR100.....22

DGR150/DGR200/DG240/DGR300/DGR500.....23

DGB40/DGB100.....24

DG97-A/DG32-A.....25

HOW TO ORDER 订货方法



The catalog is only for reference, and the detailed data must be based on our company's specification!
样本仅供参考, 具体数据以本公司提供的规格书为准!

新品速递 New product >>>

DG250-A



穿墙结构可轻松实现设备内外部的连接;电流范围40A-300A,满足不同功率设备使用。

Panel feed-through structure can realize enclosure connection easily. Current range from 40A to 300A, satisfying different device application.

| 类别 Category | DG250-A | | |
|-------------------------------|--|--|--|
| 使用级别 Use group | E | | |
| 电压(V) Rated voltage | 1000 | | |
| 电流(A) Rated current | 250 | | |
| 线径(AWG) Wire range | 6-3/0 | | |
| 耐电压 Withstanding voltage | AC3000V/1Min | | |
| 绝缘阻抗 Insulation resistance | 500MΩ/DC500V | | |
| 塑件 Housing | PA66+GF,UL94V-0 | | |
| 端子 Terminal | 铜合金,镀镍 Copper alloy,Ni plated | | |
| 螺丝 Screws | M8,钢镀锌 Steel,Zinc plated 6.0N.m/53.12Lb.In | | |
| 使用温度 Ambient temperature | -40~105°C | | |
| 极数 Poles | 2-5P | | |
| 产品尺寸图 Panel cutout | | | |

DG200D-A



“两进一出”穿墙端子
产品颜色区分正负极,红正黑负,无需标识使用省心。适用于储能PACK间串并联。

2 poles short circuit panel feed-through terminal.
The product color distinguishes the positive and negative poles, no need to mark. Used for parallel connection between PACK.

| 类别 Category | DG200D-A | | |
|-------------------------------|---|-----|-----|
| 使用级别 Use group | B | C | D |
| 电压(V) Rated voltage | 600 | 600 | 600 |
| 电流(A) Rated current | 200 | 200 | 5 |
| 线径(AWG) Wire range | 2-3/0 | | |
| 耐电压 Withstanding voltage | AC2200V/1Min | | |
| 绝缘阻抗 Insulation resistance | 500MΩ/DC500V | | |
| 塑件 Housing | PA66+GF,UL94V-0 | | |
| 端子 Terminal | 铜合金,镀镍 Copper alloy,Ni plated | | |
| 螺丝 Screws | M8,钢镀锌 Steel,Zinc plated 6.0N.m/53.1Lb.In | | |
| 使用温度 Ambient temperature | -40~105°C | | |
| 极数 Poles | 2P,4P | | |
| 产品尺寸图 Panel cutout | | | |

DG100D-A

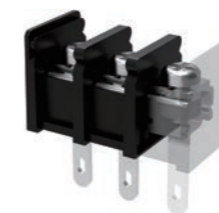


“两进一出”穿墙端子
产品颜色区分正负极,红正黑负,无需标识使用省心。适用于储能PACK间串并联。

2 poles short circuit panel feed-through terminal.
The product color distinguishes the positive and negative poles, no need to mark. Used for parallel connection between PACK.

| 类别 Category | DG100D-A | | |
|-------------------------------|--|-----|-----|
| 使用级别 Use group | B | C | D |
| 电压(V) Rated voltage | 600 | 300 | 600 |
| 电流(A) Rated current | 120 | 120 | 5 |
| 线径(AWG) Wire range | 10-2 | | |
| 耐电压 Withstanding voltage | AC2200V/1Min | | |
| 绝缘阻抗 Insulation resistance | 500MΩ/DC500V | | |
| 塑件 Housing | PA66+GF,UL94V-0 | | |
| 端子 Terminal | 铜合金,镀镍 Copper alloy,Ni plated | | |
| 螺丝 Screws | M6,钢镀锌 Steel,Ni plated 5.0N.m/44.27Lb.In | | |
| 使用温度 Ambient temperature | -40~105°C | | |
| 极数 Poles | 2P,4P | | |
| 产品尺寸图 Panel cutout | | | |

DG35-30Z(H)



扭力性提升200%,锁紧更可靠;
外形尺寸不变,可直接升级替换。
适用于变频器、伺服、电源等设备。

Torque improved by 200%, ensuring reliable connection.
The dimensions unchanged and can be directly replaced. Used for VFD, servo, power supply and others.

| 类别 Category | DG35-30Z | | |
|-------------------------------|--|---|-----|
| 使用级别 Use group | E | | |
| 电压(V) Rated voltage | 300 | / | 300 |
| 电流(A) Rated current | 20 | / | 10 |
| 线径(AWG) Wire range | 22-12 | | |
| 耐电压 Withstanding voltage | AC1600V/1Min | | |
| 绝缘阻抗 Insulation resistance | 500MΩ/DC500V | | |
| 塑件 Housing | PA66+GF,UL94V-0 | | |
| 端子 Terminal | 铜合金,镀锡 Copper alloy,Sn plated | | |
| 螺丝 Screws | M3,钢镀锌 Steel,Ni plated 1.5N.m/13.28Lb.In | | |
| 使用温度 Ambient temperature | -40~105°C | | |
| 极数 Poles | 2-14P | | |
| 产品尺寸图 Panel cutout | | | |

栅栏配套冷压端子 Matching terminal for barrier connector

不仅可以提供栅栏产品方案,同时对应冷压端子,一站式购齐,解决客户多家供应商协调问题。

Providing barrier connection program and matching terminals. Customers can easily get one-stop purchasing. No need to spending time looking for other suppliers.

预绝缘接头

Vinyl-Insulated Terminal



钩型端子

Hook Terminal



钩型绝缘端子
Insulated Hook Terminal

冷压端子 Terminals

裸端子

Non-Insulated Terminal



RNB-圆形裸端子
RNB-Non-Insulated Ring Terminal



SNB-叉形裸端子
SNB-Non-Insulated Spade Terminal

绝缘端子

Insulated Terminal



RV-圆形绝缘端子
RV-Insulated Ring Terminal



SV-叉形绝缘端子
SV-Insulated Spade Terminal

铜鼻子 Copper Nose

铝制端子头适配铝载流体,多用于电力行业。

Aluminum terminal adapted to aluminum current carrier, mostly used in the power industry.



SC 窥口鼻端子
SC Voyeur Terminal



OT 开口鼻端子
OT Opening Copper Terminal



JG 铜接线端子
JG Copper Terminal



DT 铜接线端子
DT Copper Terminal



双孔铜铝鼻子
Double-Hole Copper-Aluminum Terminal



双孔铜鼻子
Double-Hole Copper Terminal

铝端子 Aluminum terminal

主要是OT头,接线面积可达1000mm²,适用于大电流场景。

Mainly ring terminals, which cross section can reach 1000mm², and suitable for high current connection.



铜铝鼻子 Copper-Aluminum Terminal Blocks



方形
Square

圆形
Ring

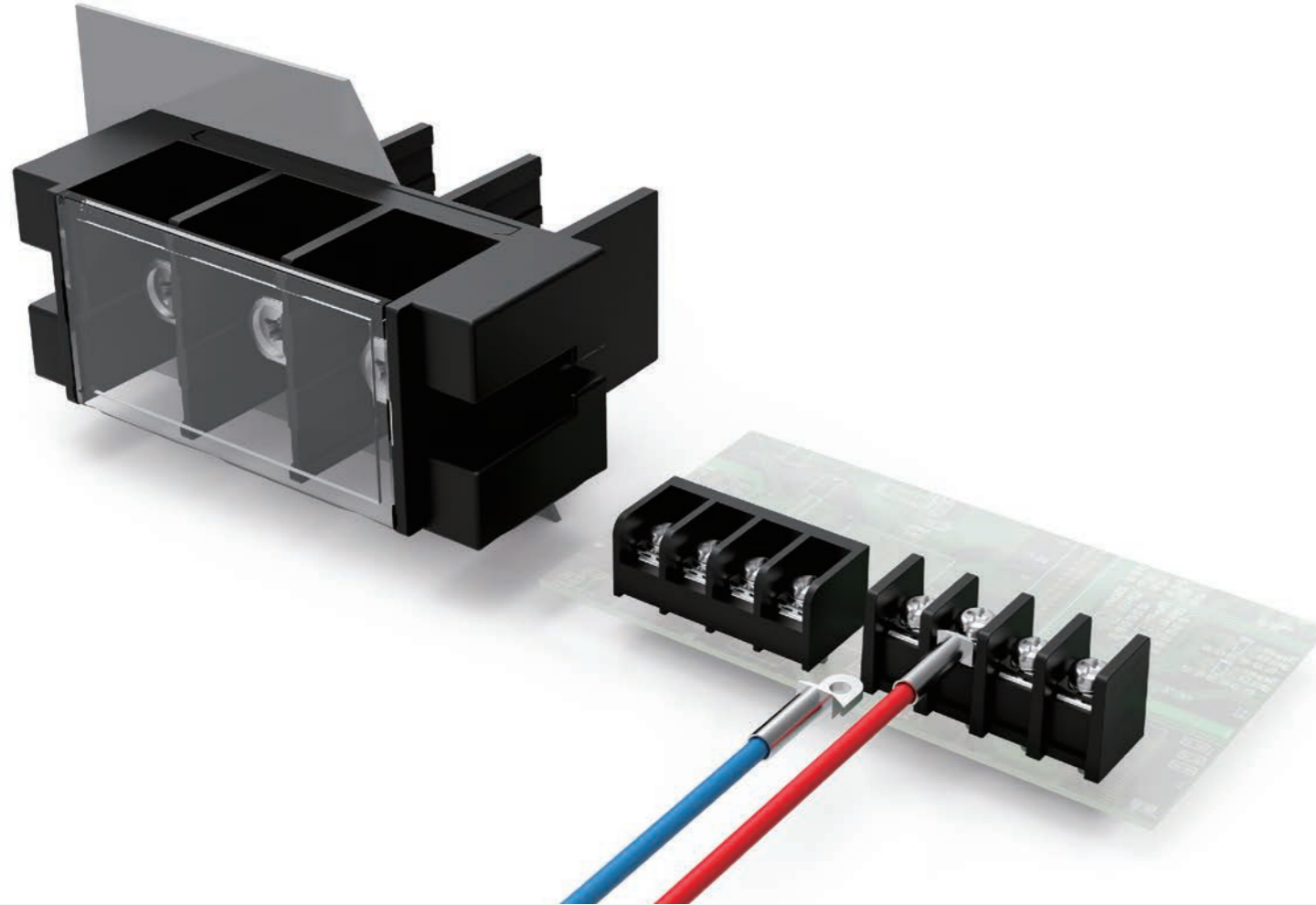
DT头
DT

栅栏式接线端子

DEGSON高松栅栏式接线端子采用螺钉连接方式,能承载较大的扭力,广泛应用于工业自动化,电源,新能源,安防等行业

Barrier Terminals

DEGSON Barrier terminal block adopts screw connection method, which can bear large torque and is widely used in industrial automation, power supply, new energy, security and other industries



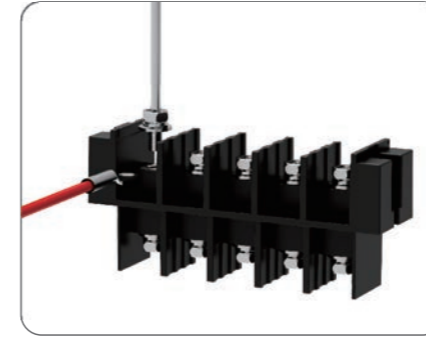
主要特点

- ✔ 螺钉锁紧,可承受大扭力,接线牢靠
- ✔ 产品线齐全,有焊板产品和线对线产品
- ✔ 提供一体式/可插拔式的双层结构,节省空间
- ✔ 安装方式有焊板、面板和导轨安装
- ✔ 最大电压可做到1000V,最大电流可做到500A

Features

- ✔ Screw locking, can withstand large torque, reliable wiring.
- ✔ The product line is complete, including welding board products and wire-to-wire products.
- ✔ Provide one-piece/pluggable double-layer structure to save space.
- ✔ The installation methods include welding plate, panel and rail installation.
- ✔ The maximum voltage can reach 1000V, and the maximum current can reach 500A.

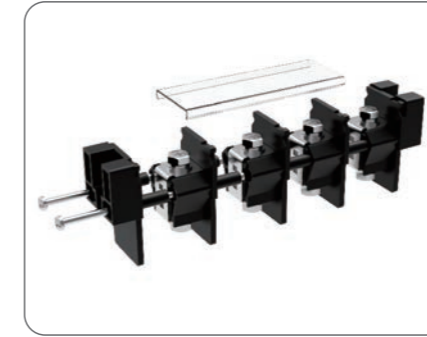
产品特点 Feature



栅栏结构,螺钉连接

可用大扭力锁紧,连接可靠

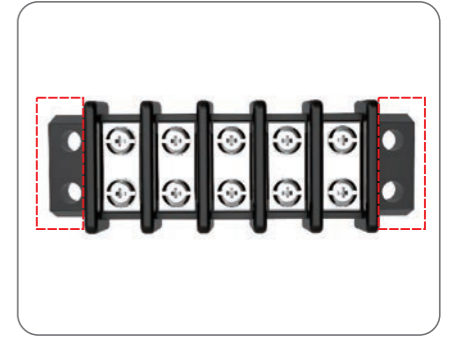
Barrier structure,screw connection
Locking with heavy torque,connection is reliable



可拼接结构

灵活组合,交期快

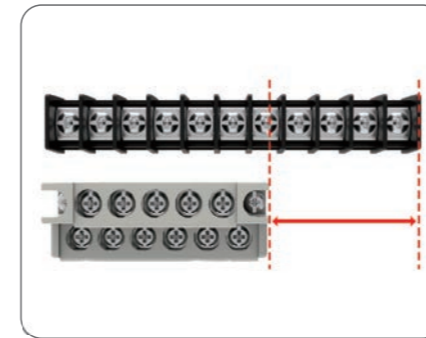
Spliced structure
Combination is flexible and delivery is fast



法兰结构

安装简单,更牢固

Flange Structure
Easy to install



双层结构

节省更多空间,满足紧凑多接点的需求

Double-layer Structure
Saving space and meeting the needs of compact multi-contact



螺钉免拆装技术

螺丝可保持松退状态,节省60%接线时间

Screw Disassemble-free technology
Screws are unlocked,which can save 60% time



穿墙结构

轻松连接壳体内外

Feed-through Structure
Suitable for enclosure connection



盖板结构

防尘防触摸,更安全

Cover Structure
Prevent electric shock, dusty



多种规格型号

提供更多选择

Multiple Specification
Provide more choices



多种安装方式

焊板、导轨、面板等多种安装方式,适用不同场景

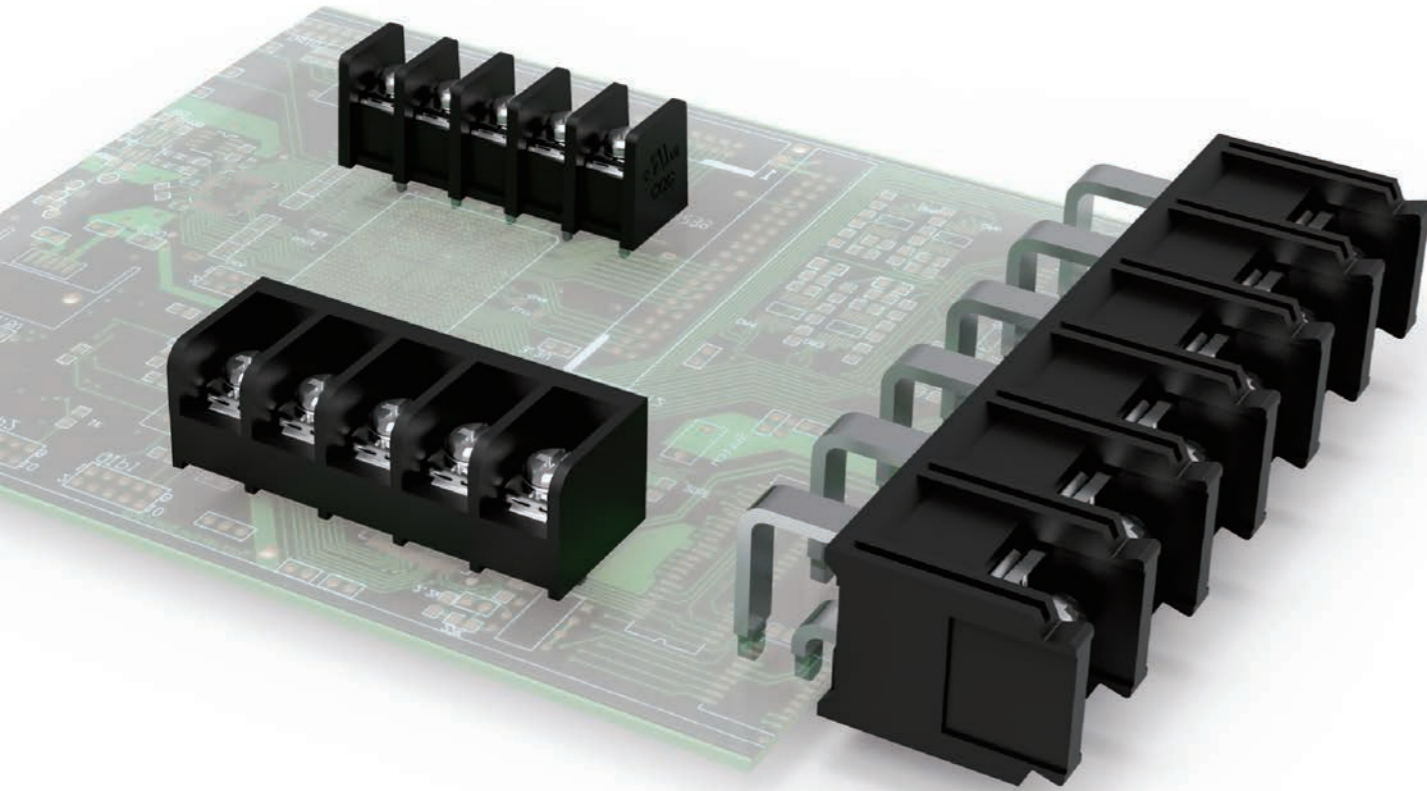
Multiple Installation Methods
Soldering,DIN-rail and panel installation, Suitable for different application

通用单层PCB

多种规格间距、不同结构的产
品可供选择,满足不同应用场
景使用需求

Single level type

A variety of pitch and structure
products for customers to choose
meeting different application
requirements



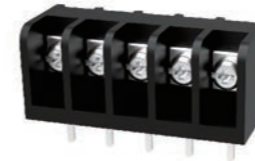
产品特点

- ✔ 额定电流10~120A, 额定电压300-600V
- ✔ 栅栏式接线结构, 连接稳定可靠
- ✔ 多种增值服务: 印字、其他特殊要求
- ✔ 应用领域: 工控、电力电源

Feature

- ✔ Rated current: 8-120A, rated voltage: 300-600V
- ✔ Barrier wiring structure, stable and reliable connection
- ✔ Multiple value-added services: printing, other special requirement
- ✔ Application: Industrial automation, Electric power

间距 Pitch: 6.35mm



DG16 规格 Type: R-B, S-B

| 类别 Category | DG16 | | |
|-------------------------------|--|-----|-----|
| 使用级别 Use group | B | C | D |
| 电压(V) Rated voltage | 300 | 150 | 300 |
| 电流(A) Rated current | 10 | 10 | 10 |
| 线径(AWG) Wire range | 22-16 | | |
| 耐电压 Withstanding voltage | AC1600V/1Min | | |
| 绝缘阻抗 Insulation resistance | 500MΩ/DC500V | | |
| 塑件 Housing | PA66, UL94V-0 | | |
| 端子 Terminal | 铜合金, 镀锡 Copper alloy, Tin plated | | |
| 螺丝 Screws | M2.5, 钢镀锌 Steel, Ni plated 0.4N.m/3.5Lb.In | | |
| 使用温度 Ambient temperature | -40~105°C | | |
| 极数 Poles | 2-24 | | |
| 产品尺寸图 Panel cutout | | | |

间距 Pitch: 7.62mm



DG25 规格 Type: C-A, C-B, S-A, S-B
R-A, R-B, H-A, H-B



DG26 规格 Type: GC-B



DG28 规格 Type: C-A, C-B, S-A, S-B
R-A, R-B, H-A, H-B

| 类别 Category | DG25 | | | DG26 | | | DG28 | | |
|-------------------------------|--|-----|-----|--|---|-----|--|-----|-----|
| | B | C | D | B | C | D | B | C | D |
| 使用级别 Use group | B | C | D | B | C | D | B | C | D |
| 电压(V) Rated voltage | 300 | 300 | 300 | 300 | - | 300 | 300 | 150 | 300 |
| 电流(A) Rated current | 15 | 15 | 10 | 15 | - | 10 | 15 | 15 | 10 |
| 线径(AWG) Wire range | 22-14 | | | 22-14 | | | 22-14 | | |
| 耐电压 Withstanding voltage | AC1600V/1Min | | | AC1600V/1Min | | | AC1600V/1Min | | |
| 绝缘阻抗 Insulation resistance | 500MΩ/DC500V | | | 500MΩ/DC500V | | | 500MΩ/DC500V | | |
| 塑件 Housing | PA66, UL94V-0 | | | PA66, UL94V-0 | | | PA66, UL94V-0 | | |
| 端子 Terminal | 铜合金, 镀锡 Copper alloy, Tin plated | | | 铜合金, 镀锡 Copper alloy, Tin plated | | | 铜合金, 镀锡 Copper alloy, Tin plated | | |
| 螺丝 Screws | M3, 钢镀锌 Steel, Ni plated 0.5N.m/4.4Lb.In | | | M3, 钢镀锌 Steel, Ni plated 0.5N.m/4.4Lb.In | | | M3, 钢镀锌 Steel, Ni plated 0.5N.m/4.4Lb.In | | |
| 使用温度 Ambient temperature | -40~105°C | | | -40~105°C | | | -40~105°C | | |
| 极数 Poles | 2-26 | | | 2-12 | | | 2-26 | | |
| 产品尺寸图 Panel cutout | | | | | | | | | |

间距 Pitch:8.25mm



DG35 规格 Type: C-A, C-B, S-A, S-B
R-A, R-B, H-A, H-B



DG36 规格 Type: S-B, R-B



DG38 规格 Type: C-A, C-B, S-A, S-B
R-A, R-B, H-A, H-B

| 类别 Category | DG35 | | | DG36 | | | DG38 | | |
|-------------------------------|--|---|-----|--|---|-----|--|-----|-----|
| | B | C | D | B | C | D | B | C | D |
| 使用级别 Use group | B | C | D | B | C | D | B | C | D |
| 电压(V) Rated voltage | 300 | - | 300 | 300 | - | 300 | 300 | 150 | 300 |
| 电流(A) Rated current | 20 | - | 10 | 20 | - | 10 | 15 | 15 | 10 |
| 线径(AWG) Wire range | 22-12 | | | 22-12 | | | 22-14 | | |
| 耐电压 Withstanding voltage | AC1600V/1Min | | | AC1600V/1Min | | | AC1600V/1Min | | |
| 绝缘阻抗 Insulation resistance | 500MΩ/DC500V | | | 500MΩ/DC500V | | | 500MΩ/DC500V | | |
| 塑件 Housing | PA66, UL94V-0 | | | PA66, UL94V-0 | | | PA66, UL94V-0 | | |
| 端子 Terminal | 铜合金, 镀锡 Copper alloy, Tin plated | | | 铜合金, 镀锡 Copper alloy, Tin plated | | | 铜合金, 镀锡 Copper alloy, Tin plated | | |
| 螺丝 Screws | M3, 钢镀锌 Steel, Ni plated 0.5N.m/4.4Lb.In | | | M3, 钢镀锌 Steel, Ni plated 0.5N.m/4.4Lb.In | | | M3, 钢镀锌 Steel, Ni plated 0.5N.m/4.4Lb.In | | |
| 使用温度 Ambient temperature | -40~105°C | | | -40~105°C | | | -40~105°C | | |
| 极数 Poles | 2-26 | | | 2-24 | | | 2-26 | | |
| 产品尺寸图 Panel cutout | | | | | | | | | |

间距 Pitch:10.0mm



DG55 规格 Type: C-A, C-B, S-A, S-B
R-A, R-B, H-A, H-B



DG58 规格 Type: S-B, R-B



DG31-B 规格 Type: C-A, C-B, S-A, S-B
R-A, R-B, H-A, H-B

| 类别 Category | DG55 | | | DG58 | | | DG31-B | | |
|-------------------------------|---|-----|-----|---|-----|-----|---|-----|-----|
| | B | C | D | B | C | D | B | C | D |
| 使用级别 Use group | B | C | D | B | C | D | B | C | D |
| 电压(V) Rated voltage | 300 | 300 | 300 | 300 | 150 | 300 | 300 | 300 | 600 |
| 电流(A) Rated current | 20 | 20 | 10 | 20 | 20 | 10 | 30 | 30 | 5 |
| 线径(AWG) Wire range | 22-12 | | | 22-12 | | | 6/18-10 | | |
| 耐电压 Withstanding voltage | AC1600V/1Min | | | AC1600V/1Min | | | AC1600V/1Min | | |
| 绝缘阻抗 Insulation resistance | 500MΩ/DC500V | | | 500MΩ/DC500V | | | 500MΩ/DC500V | | |
| 塑件 Housing | PA66, UL94V-0 | | | PA66, UL94V-0 | | | PA66, UL94V-0 | | |
| 端子 Terminal | 铜合金, 镀锡 Copper alloy, Tin plated | | | 铜合金, 镀锡 Copper alloy, Tin plated | | | 铜合金, 镀锡 Copper alloy, Tin plated | | |
| 螺丝 Screws | M4, 钢镀锌 Steel, Ni plated 1.2N.m/10.5Lb.In | | | M4, 钢镀锌 Steel, Ni plated 1.2N.m/10.5Lb.In | | | M4, 钢镀锌 Steel, Ni plated 1.2N.m/10.5Lb.In | | |
| 使用温度 Ambient temperature | -40~105°C | | | -40~105°C | | | -40~120°C | | |
| 极数 Poles | 2-26 | | | 2-22 | | | 6-10 | | |
| 产品尺寸图 Panel cutout | | | | | | | | | |

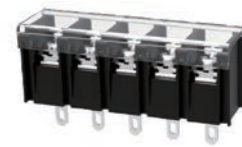
间距 Pitch:9.5mm



DG45 规格 Type: C-A, C-B, S-A, S-B
R-A, R-B, H-A, H-B



DG46 规格 Type: S-B, R-B, GS-B, GR-B
DA, DB



DG48 规格 Type: C-A, C-B, S-A, S-B
R-A, R-B, H-A, H-B

| 类别 Category | DG45 | | | DG46 | | | DG48 | | |
|-------------------------------|---|---|-----|---|-----|-----|---|-----|-----|
| | B | C | D | B | C | D | B | C | D |
| 使用级别 Use group | B | C | D | B | C | D | B | C | D |
| 电压(V) Rated voltage | 300 | - | 300 | 300 | 300 | 300 | 300 | 150 | 300 |
| 电流(A) Rated current | 25 | - | 10 | 30 | 30 | 10 | 20 | 20 | 10 |
| 线径(AWG) Wire range | 22-12 | | | 22-10 | | | 22-12 | | |
| 耐电压 Withstanding voltage | AC1600V/1Min | | | AC1600V/1Min | | | AC1600V/1Min | | |
| 绝缘阻抗 Insulation resistance | 500MΩ/DC500V | | | 500MΩ/DC500V | | | 500MΩ/DC500V | | |
| 塑件 Housing | PA66, UL94V-0 | | | PA66, UL94V-0 | | | PA66, UL94V-0 | | |
| 端子 Terminal | 铜合金, 镀锡 Copper alloy, Tin plated | | | 铜合金, 镀锡 Copper alloy, Tin plated | | | 铜合金, 镀锡 Copper alloy, Tin plated | | |
| 螺丝 Screws | M4, 钢镀锌 Steel, Ni plated 1.2N.m/10.5Lb.In | | | M4, 钢镀锌 Steel, Ni plated 1.2N.m/10.5Lb.In | | | M4, 钢镀锌 Steel, Ni plated 1.2N.m/10.5Lb.In | | |
| 使用温度 Ambient temperature | -40~105°C | | | -40~105°C | | | -40~105°C | | |
| 极数 Poles | 2-26 | | | 2-26 | | | 2-22 | | |
| 产品尺寸图 Panel cutout | | | | | | | | | |

间距 Pitch: 11mm



DG65 规格 Type: C-A, C-B, S-A, S-B
R-A, R-B, H-A, H-B



DG66 规格 Type: S-B, R-B



DG66S-2-B

| 类别 Category | DG65 | | | DG66 | | | DG66S-2-B | | |
|-------------------------------|---|---|-----|---|-----|-----|---|-----|-----|
| | B | C | D | B | C | D | B | C | D |
| 使用级别 Use group | B | C | D | B | C | D | B | C | D |
| 电压(V) Rated voltage | 300 | - | 300 | 300 | 150 | 300 | 600 | 600 | 600 |
| 电流(A) Rated current | 30 | - | 10 | 30 | 30 | 10 | 30 | 30 | 5 |
| 线径(AWG) Wire range | 22-10 | | | 22-10 | | | 22-10 | | |
| 耐电压 Withstanding voltage | AC1600V/1Min | | | AC1600V/1Min | | | AC2200V/1Min | | |
| 绝缘阻抗 Insulation resistance | 500MΩ/DC500V | | | 500MΩ/DC500V | | | 500MΩ/DC500V | | |
| 塑件 Housing | PA66, UL94V-0 | | | PA66, UL94V-0 | | | PA66, UL94V-0 | | |
| 端子 Terminal | 铜合金, 镀锡 Copper alloy, Tin plated | | | 铜合金, 镀锡 Copper alloy, Tin plated | | | 铜合金, 镀锡 Copper alloy, Tin plated | | |
| 螺丝 Screws | M4, 钢镀锌 Steel, Ni plated 1.2N.m/10.5Lb.In | | | M4, 钢镀锌 Steel, Ni plated 1.2N.m/10.5Lb.In | | | M4, 钢镀锌 Steel, Ni plated 1.2N.m/10.5Lb.In | | |
| 使用温度 Ambient temperature | -40~105°C | | | -40~105°C | | | -40~105°C | | |
| 极数 Poles | 2-22 | | | 2-26 | | | 2-5 | | |
| 产品尺寸图 Panel cutout | | | | | | | | | |

间距 Pitch: 11mm/11.5mm



DG66-DA



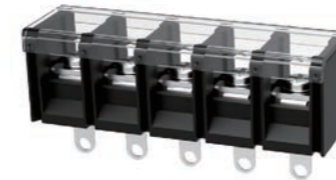
DG66-DB



DG66H-B

| 类别 Category | DG66-DA | | | DG66-DB | | | DG66H-B | | |
|-------------------------------|---|-----|-----|---|-----|-----|---|---|-----|
| | B | C | D | B | C | D | B | C | D |
| 使用级别 Use group | B | C | D | B | C | D | B | C | D |
| 电压(V) Rated voltage | 600 | 600 | 600 | 600 | 600 | 600 | 600 | - | 600 |
| 电流(A) Rated current | 30 | 30 | 5 | 30 | 30 | 5 | 30 | - | 5 |
| 线径(AWG) Wire range | 22-10 | | | 22-10 | | | 20-10 | | |
| 耐电压 Withstanding voltage | AC2200V/1Min | | | AC2200V/1Min | | | AC2200V/1Min | | |
| 绝缘阻抗 Insulation resistance | 500MΩ/DC500V | | | 500MΩ/DC500V | | | 500MΩ/DC500V | | |
| 塑件 Housing | PA66,UL94V-0 | | | PA66,UL94V-0 | | | PA66,UL94V-0 | | |
| 端子 Terminal | 铜合金, 镀锡 Copper alloy, Tin plated | | | 铜合金, 镀锡 Copper alloy, Tin plated | | | 铜合金, 镀锡 Copper alloy, Tin plated | | |
| 螺丝 Screws | M4, 钢镀锌 Steel, Ni plated 1.8N.m/16Lb.In | | | M4, 钢镀锌 Steel, Ni plated 1.8N.m/16Lb.In | | | M4, 钢镀锌 Steel, Ni plated 1.2N.m/10.5Lb.In | | |
| 使用温度 Ambient temperature | -40~105°C | | | -40~105°C | | | -30~120°C | | |
| 极数 Poles | 2-25 | | | 2-25 | | | 9 | | |
| 产品尺寸图 Panel cutout | | | | | | | | | |

间距 Pitch: 13.0mm/15.5mm



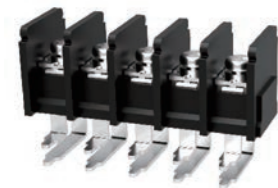
DG78 规格 Type: C-A, C-B, S-A, S-B
R-A, R-B, H-A, H-B



DG90-B

| 类别 Category | DG78 | | | DG90-B | | |
|-------------------------------|---|-----|-----|---|-----|-----|
| | B | C | D | B | C | D |
| 使用级别 Use group | B | C | D | B | C | D |
| 电压(V) Rated voltage | 600 | 600 | 600 | 600 | 600 | 600 |
| 电流(A) Rated current | 40 | 40 | 5 | 90 | 90 | 5 |
| 线径(AWG) Wire range | 18-10 | | | 22-6 | | |
| 耐电压 Withstanding voltage | AC2200V/1Min | | | AC2200V/1Min | | |
| 绝缘阻抗 Insulation resistance | 500MΩ/DC500V | | | 500MΩ/DC500V | | |
| 塑件 Housing | PA66,UL94V-0 | | | PBT,UL94V-0 | | |
| 端子 Terminal | 铜合金, 镀锡 Copper alloy, Tin plated | | | 铜合金, 镀锡 Copper alloy, Ni plated | | |
| 螺丝 Screws | M4, 钢镀锌 Steel, Ni plated 1.2N.m/10.5Lb.In | | | M6, 钢镀锌 Steel, Ni plated 3.5N.m/31Lb.In | | |
| 使用温度 Ambient temperature | -40~105°C | | | -30~120°C | | |
| 极数 Poles | 2-22 | | | 3 | | |
| 产品尺寸图 Panel cutout | | | | | | |

间距 Pitch: 11mm



DG66RT



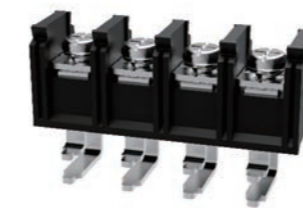
DG66VT

| 类别 Category | DG66RT | | | DG66VT | | |
|-------------------------------|---|-----|-----|---|-----|-----|
| | B | C | D | B | C | D |
| 使用级别 Use group | B | C | D | B | C | D |
| 电压(V) Rated voltage | 300 | 300 | 300 | 300 | 300 | 600 |
| 电流(A) Rated current | 40 | 40 | 10 | 40 | 40 | 5 |
| 线径(AWG) Wire range | 18-8/4 | | | 18-8 | | |
| 耐电压 Withstanding voltage | AC1600V/1Min | | | AC1600V/1Min | | |
| 绝缘阻抗 Insulation resistance | 500MΩ/DC500V | | | 500MΩ/DC500V | | |
| 塑件 Housing | PA66+GF,UL94V-0 | | | PA66,UL94V-0 | | |
| 端子 Terminal | 铜合金, 镀锡 Copper alloy, Tin plated | | | 铜合金, 镀锡 Copper alloy, Tin plated | | |
| 螺丝 Screws | M4, 钢镀锌 Steel, Ni plated 1.7N.m/15Lb.In | | | M4, 钢镀锌 Steel, Ni plated 1.7N.m/15Lb.In | | |
| 使用温度 Ambient temperature | -40~105°C | | | -40~105°C | | |
| 极数 Poles | 2-24 | | | 2-12 | | |
| 产品尺寸图 Panel cutout | | | | | | |

间距 Pitch: 16.0mm



DG88



DG88RT

| 类别 Category | DG88 | | | DG88RT | | |
|-------------------------------|---|-----|-----|---|-----|-----|
| | B | C | D | B | C | D |
| 使用级别 Use group | B | C | D | B | C | D |
| 电压(V) Rated voltage | 600 | 600 | 600 | 600 | 600 | 600 |
| 电流(A) Rated current | 100 | 100 | 5 | 100 | 100 | 5 |
| 线径(AWG) Wire range | 14-3 | | | 10-3 | | |
| 耐电压 Withstanding voltage | AC2200V/1Min | | | AC2200V/1Min | | |
| 绝缘阻抗 Insulation resistance | 500MΩ/DC500V | | | 500MΩ/DC500V | | |
| 塑件 Housing | PA66,UL94V-0 | | | PA66,UL94V-0 | | |
| 端子 Terminal | 铜合金, 镀锡 Copper alloy, Tin plated | | | 铜合金, 镀锡 Copper alloy, Tin plated | | |
| 螺丝 Screws | M5, 钢镀锌 Steel, Ni plated 2.5N.m/22Lb.In | | | M5, 钢镀锌 Steel, Ni plated 2.5N.m/22Lb.In | | |
| 使用温度 Ambient temperature | -40~105°C | | | -40~105°C | | |
| 极数 Poles | 2-20 | | | 2-12 | | |
| 产品尺寸图 Panel cutout | | | | | | |

间距 Pitch: 14.5mm



DG1450-B



DG1450H-B



DG1450H-B-10A

| 类别 Category | DG1450-B | | | DG1450H-B | | | DG1450H-B-10A | | |
|-------------------------------|---|-----|-----|---|-----|-----|---|-----|-----|
| | B | C | D | B | C | D | B | C | D |
| 使用级别 Use group | B | C | D | B | C | D | B | C | D |
| 电压(V) Rated voltage | 300 | 300 | 300 | 600 | 600 | 600 | 600 | 600 | 600 |
| 电流(A) Rated current | 50 | 50 | 10 | 45 | 45 | 5 | 45 | 45 | 5 |
| 线径(AWG) Wire range | 22-8 | | | 22-8 | | | 22-8 | | |
| 耐电压 Withstanding voltage | AC1600V/1Min | | | AC2200V/1Min | | | AC2200V/1Min | | |
| 绝缘阻抗 Insulation resistance | 500MΩ/DC500V | | | 500MΩ/DC500V | | | 500MΩ/DC500V | | |
| 塑件 Housing | PBT,UL94V-0 | | | PBT,UL94V-0 | | | PBT,UL94V-0 | | |
| 端子 Terminal | 铜合金, 镀锡 Copper alloy, Tin plated | | | 铜合金, 镀锡 Copper alloy, Tin plated | | | 铜合金, 镀锡 Copper alloy, Tin plated | | |
| 螺丝 Screws | M5, 钢镀锌 Steel, Zinc plated 2.0N.m/17.5Lb.In | | | M5, 钢镀锌 Steel, Zinc plated 2.0N.m/17.5Lb.In | | | M5, 钢镀锌 Steel, Zinc plated 2.0N.m/17.5Lb.In | | |
| 使用温度 Ambient temperature | -40~120°C | | | -40~120°C | | | -40~120°C | | |
| 极数 Poles | 2-14 | | | 3-14 | | | 3-14 | | |
| 产品尺寸图 Panel cutout | | | | | | | | | |

间距 Pitch: 17.0mm



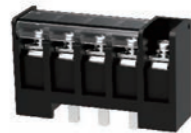
DG1700-B



DG1716-B

| 类别 Category | DG1700-B | | | DG1716-B | | |
|-------------------------------|---|-----|-----|---|-----|-----|
| | B | C | D | B | C | D |
| 使用级别 Use group | B | C | D | B | C | D |
| 电压(V) Rated voltage | 600 | 600 | 600 | 600 | 600 | 600 |
| 电流(A) Rated current | 65 | 65 | 5 | 80 | 80 | 5 |
| 线径(AWG) Wire range | 22-6 | | | 26-4 | | |
| 耐电压 Withstanding voltage | AC2200V/1Min | | | AC2200V/1Min | | |
| 绝缘阻抗 Insulation resistance | 500MΩ/DC500V | | | 500MΩ/DC500V | | |
| 塑件 Housing | PBT,UL94V-0 | | | PBT,UL94V-0 | | |
| 端子 Terminal | 铜合金, 镀锡 Copper alloy, Tin plated | | | 铜合金, 镀锡 Copper alloy, Tin plated | | |
| 螺丝 Screws | M6, 钢镀锌 Steel, Zinc plated 2.5N.m/22Lb.In | | | M6, 钢镀锌 Steel, Zinc plated 7.9N.m/70Lb.In | | |
| 使用温度 Ambient temperature | -40~120°C | | | -40~120°C | | |
| 极数 Poles | 3-14 | | | 4-14 | | |
| 产品尺寸图 Panel cutout | | | | | | |

间距 Pitch: 14.5mm



DG1450H-B-20A



DG1450H-B-30A



DG1450H-B-40A

| 类别 Category | DG1450H-B-20A | | | DG1450H-B-30A | | | DG1450H-B-40A | | |
|-------------------------------|---|-----|-----|---|-----|-----|---|-----|-----|
| | B | C | D | B | C | D | B | C | D |
| 使用级别 Use group | B | C | D | B | C | D | B | C | D |
| 电压(V) Rated voltage | 600 | 600 | 600 | 600 | 600 | 600 | 600 | 600 | 600 |
| 电流(A) Rated current | 57 | 57 | 5 | 45 | 45 | 5 | 45 | 45 | 5 |
| 线径(AWG) Wire range | 22-8 | | | 22-8 | | | 22-8 | | |
| 耐电压 Withstanding voltage | AC2200V/1Min | | | AC2200V/1Min | | | AC2200V/1Min | | |
| 绝缘阻抗 Insulation resistance | 500MΩ/DC500V | | | 500MΩ/DC500V | | | 500MΩ/DC500V | | |
| 塑件 Housing | PBT,UL94V-0 | | | PBT,UL94V-0 | | | PBT,UL94V-0 | | |
| 端子 Terminal | 铜合金, 镀锡 Copper alloy, Tin plated | | | 铜合金, 镀锡 Copper alloy, Tin plated | | | 铜合金, 镀锡 Copper alloy, Tin plated | | |
| 螺丝 Screws | M5, 钢镀锌 Steel, Zinc plated 2.3N.m/20Lb.In | | | M5, 钢镀锌 Steel, Zinc plated 2.0N.m/17.5Lb.In | | | M5, 钢镀锌 Steel, Zinc plated 2.0N.m/17.5Lb.In | | |
| 使用温度 Ambient temperature | -40~120°C | | | -40~120°C | | | -40~120°C | | |
| 极数 Poles | 3-14 | | | 3-14 | | | 2-14 | | |
| 产品尺寸图 Panel cutout | | | | | | | | | |

间距 Pitch: 20.0mm



DG2000-B



DG2000H-B

| 类别 Category | DG2000-B | | | DG2000H-B | | |
|-------------------------------|---|-----|-----|---|-----|-----|
| | B | C | D | B | C | D |
| 使用级别 Use group | B | C | D | B | C | D |
| 电压(V) Rated voltage | 600 | 600 | 600 | 600 | 600 | 600 |
| 电流(A) Rated current | 75 | 75 | 5 | 80 | 80 | 5 |
| 线径(AWG) Wire range | 26-4 | | | 26-4 | | |
| 耐电压 Withstanding voltage | AC2200V/1Min | | | AC2200V/1Min | | |
| 绝缘阻抗 Insulation resistance | 500MΩ/DC500V | | | 500MΩ/DC500V | | |
| 塑件 Housing | PBT,UL94V-0 | | | PBT,UL94V-0 | | |
| 端子 Terminal | 铜合金, 镀锡 Copper alloy, Tin plated | | | 铜合金, 镀锡 Copper alloy, Tin plated | | |
| 螺丝 Screws | M6, 钢镀锌 Steel, Ni plated 2.5N.m/22Lb.In | | | M6, 钢镀锌 Steel, Ni plated 2.9N.m/26Lb.In | | |
| 使用温度 Ambient temperature | -40~120°C | | | -40~120°C | | |
| 极数 Poles | 2-12 | | | 2-12 | | |
| 产品尺寸图 Panel cutout | | | | | | |

间距 Pitch:20.2mm

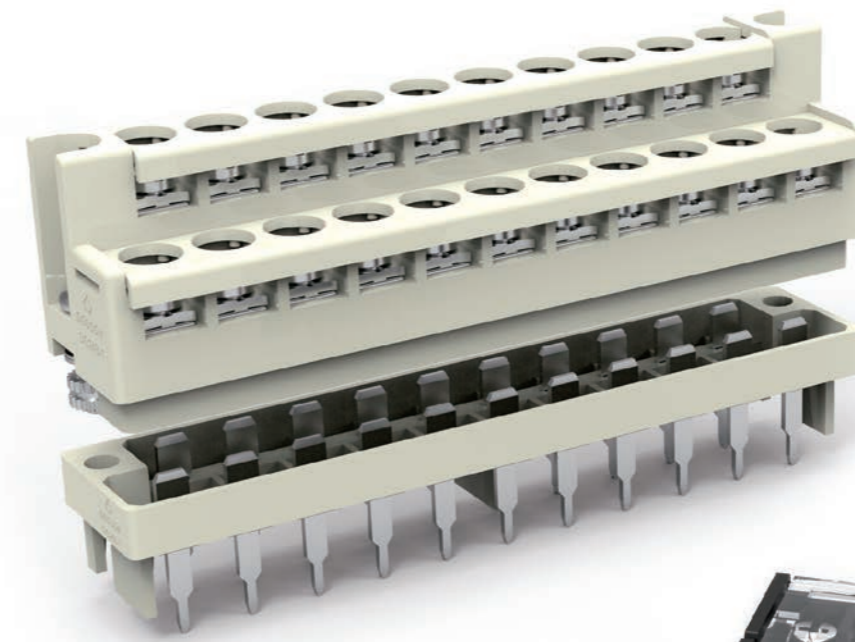


DG2020-B



DG2020-B-10A

| 类别 Category | DG2020-B | | | DG2020-B-10A | | |
|-------------------------------|---|-----|-----|---|-----|-----|
| | B | C | D | B | C | D |
| 使用级别 Use group | B | C | D | B | C | D |
| 电压(V) Rated voltage | 600 | 600 | 600 | 600 | 600 | 600 |
| 电流(A) Rated current | 100 | 100 | 5 | 115 | 115 | 5 |
| 线径(AWG) Wire range | 18-3 | | | 18-2 | | |
| 耐电压 Withstanding voltage | AC2200V/1Min | | | AC2200V/1Min | | |
| 绝缘阻抗 Insulation resistance | 500MΩ/DC500V | | | 500MΩ/DC500V | | |
| 塑件 Housing | PBT,UL94V-0 | | | PBT,UL94V-0 | | |
| 端子 Terminal | 铜合金,镀锡 Copper alloy,Tin plated | | | 铜合金,镀锡 Copper alloy,Tin plated | | |
| 螺丝 Screws | M6,钢镀锌 Steel,Zinc plated 7.9N.m/70Lb.In | | | M6,钢镀锌 Steel,Zinc plated 7.9N.m/70Lb.In | | |
| 使用温度 Ambient temperature | -40~120°C | | | -40~120°C | | |
| 极数 Poles | 11 | | | 11 | | |
| 产品尺寸图 Panel cutout | | | | | | |

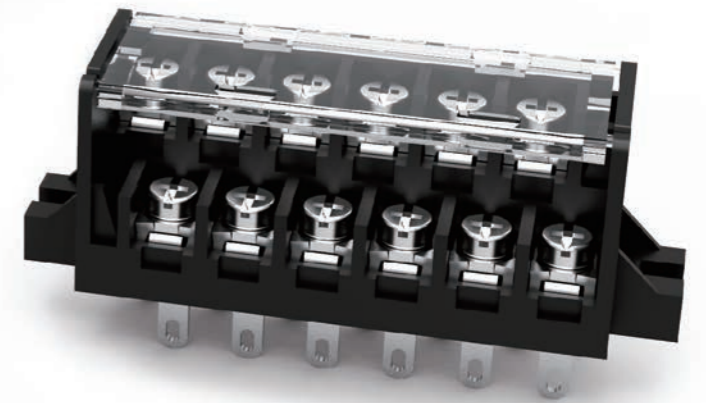


双层PCB-PLC端子

双层结构设计,节省空间,
满足紧凑多接点的需求

Double level type

Double layer structure design
can save space and meet the
needs of compact multi-contact



间距 Pitch:23.5mm



DG2350



DG2350-50A

| 类别 Category | DG2350 | | | DG2350-50A | | |
|-------------------------------|---|-----|-----|---|-----|-----|
| | B | C | D | B | C | D |
| 使用级别 Use group | B | C | D | B | C | D |
| 电压(V) Rated voltage | 600 | 600 | 600 | 600 | 600 | 600 |
| 电流(A) Rated current | 120 | 120 | 5 | 120 | 120 | 5 |
| 线径(AWG) Wire range | 2-1/0 | | | 2-1/0 | | |
| 耐电压 Withstanding voltage | AC2200V/1Min | | | AC2200V/1Min | | |
| 绝缘阻抗 Insulation resistance | 500MΩ/DC500V | | | 500MΩ/DC500V | | |
| 塑件 Housing | PA66,UL94V-0 | | | PA66,UL94V-0 | | |
| 端子 Terminal | 铜合金,镀锡 Copper alloy,Tin plated | | | 铜合金,镀锡 Copper alloy,Tin plated | | |
| 螺丝 Screws | M8,钢镀锌镍合金 Steel,Zinc-nickel plated 5.5N.m/48.8Lb.In | | | M8,钢镀锌镍合金 Steel,Zinc-nickel plated 5.5N.m/48.8Lb.In | | |
| 使用温度 Ambient temperature | -40~120°C | | | -40~120°C | | |
| 极数 Poles | 2-6 | | | 4 | | |
| 产品尺寸图 Panel cutout | | | | | | |

产品特点

- ✓ 额定电流8~20A,额定电压300V
- ✓ 栅栏式接线结构,连接稳定可靠
- ✓ 多种增值服务:印字、镀金、其他特殊要求
- ✓ 应用领域:工控

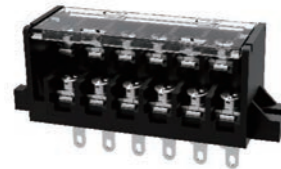
Feature

- ✓ Rated current:8-20A, rated voltage:300V
- ✓ Barrier wiring structure, stable and reliable connection
- ✓ Multiple value-added services: printing, gold plated, other special requirement
- ✓ Application: Industrial automation

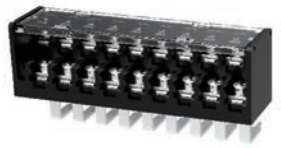
间距 Pitch:7.62mm



DG24-1



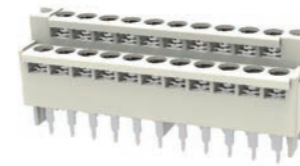
DG24-2



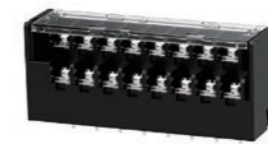
DG24-3

| 类别 Category | DG24-1 | | | DG24-2 | | | DG24-3 | | |
|-------------------------------|--|---|-----|--|---|-----|--|---|-----|
| | B | C | D | B | C | D | B | C | D |
| 使用级别 Use group | B | C | D | B | C | D | B | C | D |
| 电压(V) Rated voltage | 300 | - | 300 | 300 | - | 300 | 300 | - | 300 |
| 电流(A) Rated current | 15 | - | 10 | 15 | - | 10 | 15 | - | 10 |
| 线径(AWG) Wire range | 22-14 | | | 22-14 | | | 22-14 | | |
| 耐电压 Withstanding voltage | AC1600V/1Min | | | AC1600V/1Min | | | AC1600V/1Min | | |
| 绝缘阻抗 Insulation resistance | 500MΩ/DC500V | | | 500MΩ/DC500V | | | 500MΩ/DC500V | | |
| 塑件 Housing | PA66,UL94V-0 | | | PA66,UL94V-0 | | | PA66,UL94V-0 | | |
| 端子 Terminal | 铜合金,镀锡 Copper alloy,Tin plated | | | 铜合金,镀锡 Copper alloy,Tin plated | | | 铜合金,镀锡 Copper alloy,Tin plated | | |
| 螺丝 Screws | M3,钢镀锌 Steel,Ni plated 0.5N.m/4.5Lb.In | | | M3,钢镀锌 Steel,Ni plated 0.5N.m/4.5Lb.In | | | M3,钢镀锌 Steel,Ni plated 0.5N.m/4.5Lb.In | | |
| 使用温度 Ambient temperature | -40~105°C | | | -40~105°C | | | -40~105°C | | |
| 极数 Poles | 6-48(偶数poles) | | | 8-48(偶数poles) | | | 6-48(偶数poles) | | |
| 产品尺寸图 Panel cutout | | | | | | | | | |

间距 Pitch:7.62mm



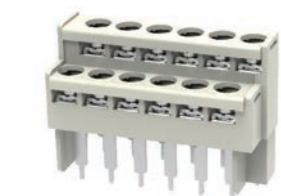
DG24B-1



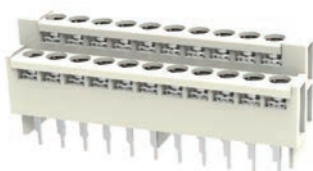
DG24B-2

| 类别 Category | DG24B-1 | | | DG24B-2 | | |
|-------------------------------|---|---|-----|--|---|-----|
| | B | C | D | B | C | D |
| 使用级别 Use group | B | C | D | B | C | D |
| 电压(V) Rated voltage | 300 | - | 300 | 300 | - | 300 |
| 电流(A) Rated current | 8 | - | 10 | 14 | - | 10 |
| 线径(AWG) Wire range | 22-14 | | | 24-14 | | |
| 耐电压 Withstanding voltage | AC1600V/1Min | | | AC1600V/1Min | | |
| 绝缘阻抗 Insulation resistance | 500MΩ/DC500V | | | 500MΩ/DC500V | | |
| 塑件 Housing | PBT,UL94V-0 | | | PA66,UL94V-0 | | |
| 端子 Terminal | 铜合金,镀金 Copper alloy,Gold plated | | | 铜合金,镀金 Copper alloy,Gold plated | | |
| 螺丝 Screws | M3,钢镀锌 Steel,Ni plated 1.5N.m/13.3Lb.In | | | M3,钢镀锌 Steel,Ni plated 0.5N.m/4.5Lb.In | | |
| 使用温度 Ambient temperature | -40~120°C | | | -40~105°C | | |
| 极数 Poles | 5-49(奇数poles) | | | 4-48(偶数poles) | | |
| 产品尺寸图 Panel cutout | | | | | | |

间距 Pitch:7.62mm



DG24-4



DG24-5

| 类别 Category | DG24-4 | | | DG24-5 | | |
|-------------------------------|--|---|-----|--|---|---|
| | B | C | D | B | C | D |
| 使用级别 Use group | B | C | D | B | C | D |
| 电压(V) Rated voltage | 300 | - | 300 | 300 | - | - |
| 电流(A) Rated current | 8 | - | 10 | 8 | - | - |
| 线径(AWG) Wire range | 22-14 | | | 22-14 | | |
| 耐电压 Withstanding voltage | AC1600V/1Min | | | AC1600V/1Min | | |
| 绝缘阻抗 Insulation resistance | 500MΩ/DC500V | | | 500MΩ/DC500V | | |
| 塑件 Housing | PBT,UL94V-0 | | | PBT,UL94V-0 | | |
| 端子 Terminal | 铜合金,镀锡 Copper alloy,Tin plated | | | 铜合金,镀锡 Copper alloy,Tin plated | | |
| 螺丝 Screws | M3,钢镀锌 Steel,Ni plated 0.5N.m/4.5Lb.In | | | M3,钢镀锌 Steel,Ni plated 0.5N.m/4.5Lb.In | | |
| 使用温度 Ambient temperature | -40~120°C | | | -40~120°C | | |
| 极数 Poles | 10-48(偶数poles) | | | 19,21,29 | | |
| 产品尺寸图 Panel cutout | | | | | | |

间距 Pitch:9.52mm/9.525mm



DG44-1



DG44B-1

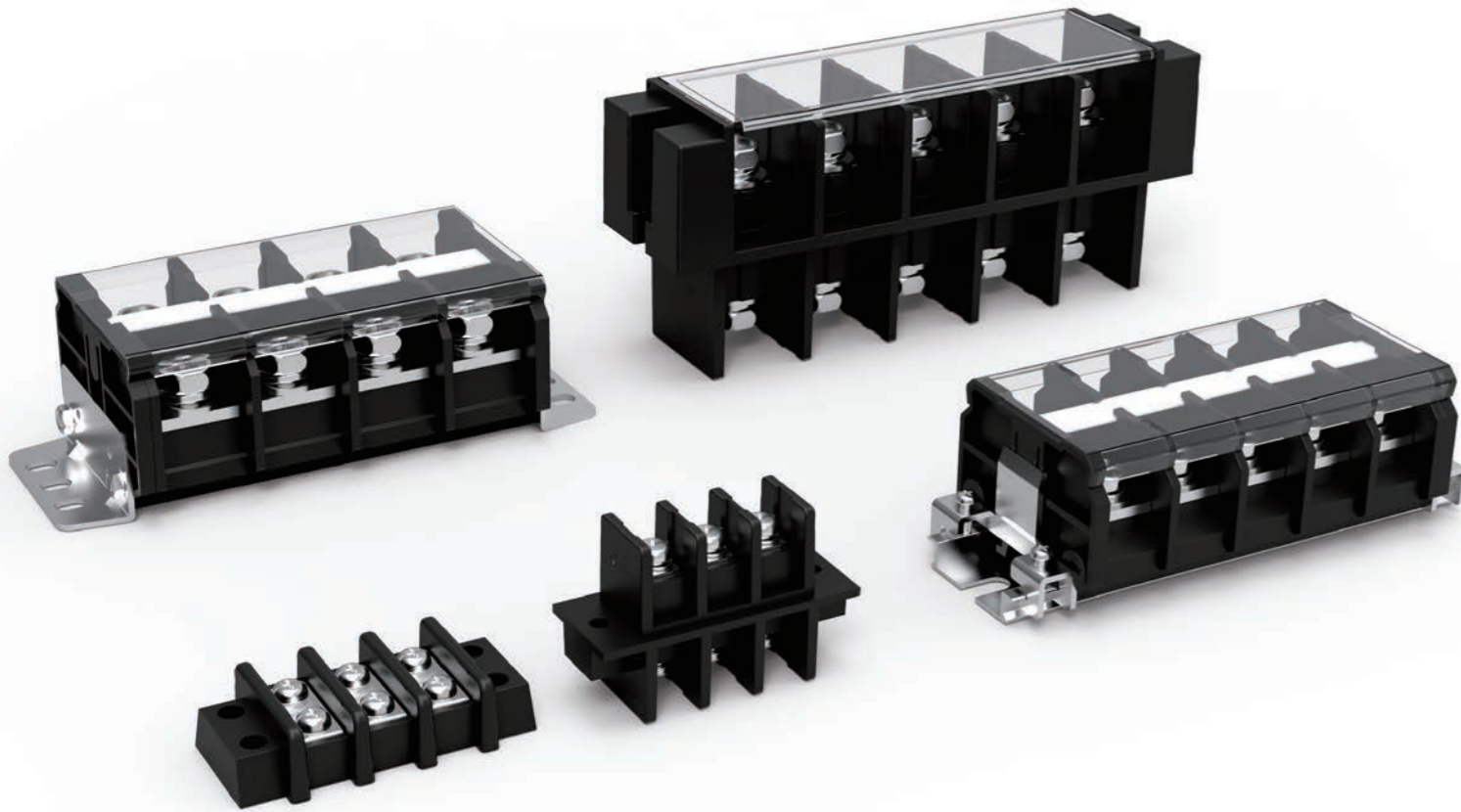
| 类别 Category | DG44-1 | | | DG44B-1 | | |
|-------------------------------|---|---|-----|--|---|-----|
| | B | C | D | B | C | D |
| 使用级别 Use group | B | C | D | B | C | D |
| 电压(V) Rated voltage | 300 | - | 300 | 300 | - | 300 |
| 电流(A) Rated current | 20 | - | 10 | 15 | - | 10 |
| 线径(AWG) Wire range | 18-12 | | | 22-14 | | |
| 耐电压 Withstanding voltage | AC1600V/1Min | | | AC1600V/1Min | | |
| 绝缘阻抗 Insulation resistance | 500MΩ/DC500V | | | 500MΩ/DC500V | | |
| 塑件 Housing | PBT,UL94V-0 | | | PA66,UL94V-0 | | |
| 端子 Terminal | 铜合金,镀锡 Copper alloy,Tin plated | | | 铜合金,镀金 Copper alloy,Gold plated | | |
| 螺丝 Screws | M3.5,钢镀锌 Steel,Zinc plated 1.4N.m/12.4Lb.In | | | M3.5,钢镀锌 Steel,Zinc plated 0.8N.m/7Lb.In | | |
| 使用温度 Ambient temperature | -40~120°C | | | -40~105°C | | |
| 极数 Poles | 4-20 | | | 10-36 | | |
| 产品尺寸图 Panel cutout | | | | | | |

栅栏转接端子

可用于设备间接线或控制柜上配电使用,满足大功率电力传输需求

Transfer type

Applicable to the wiring between devices or power distribution of control cabinet, meeting high power transmission requirements



产品特点

- ✓ 额定电流10~500A, 额定电压300-1000V
- ✓ 栅栏式接线结构, 连接稳定可靠
- ✓ 多种增值服务: 印字、其他特殊要求
- ✓ 应用领域: 工控、电力电源、新能源

Feature

- ✓ Rated current: 10-500A, rated voltage: 300-1000V
- ✓ Barrier wiring structure, stable and reliable connection
- ✓ Multiple value-added services: printing, other special requirement
- ✓ Application: Industrial automation, Electric power, New energy

额定电流 Rated current: 20A/25A/30A



DG49-A 间距 Pitch: 9.5mm



DG69-A 间距 Pitch: 11mm



DG89-A 间距 Pitch: 14mm

| 类别 Category | DG49-A | | | DG69-A | | | DG89-A | | |
|-------------------------------|--|-----|-----|--|-----|-----|---|-----|-----|
| | B | C | D | B | C | D | B | C | D |
| 使用级别 Use group | B | C | D | B | C | D | B | C | D |
| 电压(V) Rated voltage | 300 | 150 | 300 | 300 | 300 | 300 | 300 | 300 | 300 |
| 电流(A) Rated current | 20 | 20 | 10 | 25 | 25 | 10 | 30 | 30 | 5 |
| 线径(AWG) Wire range | 22-12 | | | 22-12 | | | 22-10 | | |
| 耐电压 Withstanding voltage | AC1600V/1Min | | | AC1600V/1Min | | | AC1600V/1Min | | |
| 绝缘阻抗 Insulation resistance | 500MΩ/DC500V | | | 500MΩ/DC500V | | | 500MΩ/DC500V | | |
| 塑件 Housing | PC, UL94V-0 | | | PC, UL94V-0 | | | PC, UL94V-0 | | |
| 端子 Terminal | 铜合金, 镀锡 Copper alloy, Tin plated | | | 铜合金, 镀锡 Copper alloy, Tin plated | | | 铜合金, 镀锡 Copper alloy, Tin plated | | |
| 螺丝 Screws | M3.5, 钢镀锌 Steel, Ni plated 0.8N.m/7Lb.In | | | M3.5, 钢镀锌 Steel, Ni plated 0.8N.m/7Lb.In | | | M4, 钢镀锌 Steel, Ni plated 1.2N.m/10.5Lb.In | | |
| 使用温度 Ambient temperature | -40~125°C | | | -40~125°C | | | -40~125°C | | |
| 极数 Poles | 2-24 | | | 2-26 | | | 2-18 | | |
| 产品尺寸图 Panel cutout | | | | | | | | | |

额定电流 Rated current: 30A/75A



DG98-A 间距 Pitch: 14.28mm



DG99-A 间距 Pitch: 14.75mm

| 类别 Category | DG98-A | | | DG99-A | | |
|-------------------------------|---|-----|-----|---|-----|-----|
| | B | C | D | B | C | D |
| 使用级别 Use group | B | C | D | B | C | D |
| 电压(V) Rated voltage | 600 | 600 | 600 | 600 | 600 | 600 |
| 电流(A) Rated current | 30 | 30 | 5 | 75 | 75 | 5 |
| 线径(AWG) Wire range | 20-10 | | | 14-4 | | |
| 耐电压 Withstanding voltage | AC2200V/1Min | | | AC2200V/1Min | | |
| 绝缘阻抗 Insulation resistance | 500MΩ/DC500V | | | 500MΩ/DC500V | | |
| 塑件 Housing | PC, UL94V-0 | | | PC, UL94V-0 | | |
| 端子 Terminal | 铜合金, 镀锡 Copper alloy, Tin plated | | | 铜合金, 镀锡 Copper alloy, Tin plated | | |
| 螺丝 Screws | M4, 钢镀锌 Steel, Zinc plated 1.2N.m/10.5Lb.In | | | M5, 钢镀锌 Steel, Zinc plated 2.0N.m/17.5Lb.In | | |
| 使用温度 Ambient temperature | -40~125°C | | | -40~125°C | | |
| 极数 Poles | 2-13 | | | 2-12 | | |
| 产品尺寸图 Panel cutout | | | | | | |

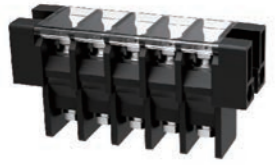
额定电流 Rated current: 30A/40A/75A



DG30-A 间距 Pitch:13mm



DG40-A 间距 Pitch:13mm



DG75-A 间距 Pitch:16mm

| 类别 Category | DG30-A | | | DGR40-A | | | DGR75-A | | |
|-------------------------------|---|---|-----|---|-----|-----|---|-----|-----|
| | B | C | D | B | C | D | B | C | D |
| 使用级别 Use group | B | C | D | B | C | D | B | C | D |
| 电压(V) Rated voltage | 300 | - | 300 | 600 | 600 | 600 | 600 | 600 | 600 |
| 电流(A) Rated current | 30 | - | 10 | 40 | 40 | 5 | 75 | 75 | 5 |
| 线径(AWG) Wire range | 28-10 | | | 22-8 | | | 21-4 | | |
| 耐电压 Withstanding voltage | AC1600V/1Min | | | AC2200V/1Min | | | AC2200V/1Min | | |
| 绝缘阻抗 Insulation resistance | 500MΩ/DC500V | | | 500MΩ/DC500V | | | 500MΩ/DC500V | | |
| 塑件 Housing | PA66,UL94V-0 | | | PA66+GF,UL94V-0 | | | PBT,UL94V-0 | | |
| 端子 Terminal | 铜合金,镀锡 Copper alloy,Tin plated | | | 铜合金,镀锡 Copper alloy,Tin plated | | | 铜合金,镀镍 Copper alloy,Ni plated | | |
| 螺丝 Screws | M4,钢镀锌 Steel,Zinc plated 1.2N.m/10.5Lb.In | | | M4,钢镀锌 Steel,Zinc plated 1.2N.m/10.5Lb.In | | | M6,钢镀锌 Steel,Ni plated 5.0N.m/44.3Lb.In | | |
| 使用温度 Ambient temperature | -40~120°C | | | -40~120°C | | | -40~120°C | | |
| 极数 Poles | 2-10 | | | 2-10 | | | 2-10 | | |
| 产品尺寸图 Panel cutout | | | | | | | | | |

额定电流 Rated current: 10A/20A/30A



DGR10 规格: 铝轨
Type: Al rail



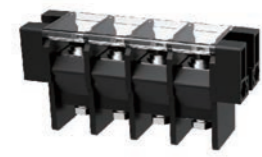
DGR20 规格: 铝轨
Type: Al rail



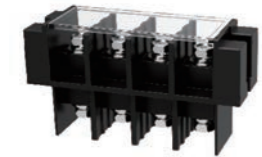
DGR30 规格: 铝轨
Type: Al rail

| 类别 Category | DGR10 | | | DGR20 | | | DGR30 | | |
|-------------------------------|--|------|-----|--|-----|-----|---|-----|-----|
| | B | C | D | B | C | D | B | C | D |
| 使用级别 Use group | B | C | D | B | C | D | B | C | D |
| 电压(V) Rated voltage | 600 | 6000 | 600 | 600 | 600 | 600 | 600 | 600 | 600 |
| 电流(A) Rated current | 10 | 10 | 5 | 20 | 20 | 5 | 30 | 30 | 5 |
| 线径(AWG) Wire range | 24-16 | | | 24-12 | | | 20-10 | | |
| 耐电压 Withstanding voltage | AC2200V/1Min | | | AC2200V/1Min | | | AC2200V/1Min | | |
| 绝缘阻抗 Insulation resistance | 500MΩ/DC500V | | | 500MΩ/DC500V | | | 500MΩ/DC500V | | |
| 塑件 Housing | PC,UL94V-0 | | | PC,UL94V-0 | | | PC,UL94V-0 | | |
| 端子 Terminal | 铜合金,镀镍 Copper alloy,Ni plated | | | 铜合金,镀镍 Copper alloy,Ni plated | | | 铜合金,镀镍 Copper alloy,Ni plated | | |
| 螺丝 Screws | M3,钢镀锌 Steel,Zinc plated 0.5N.m/4.5Lb.In | | | M3.5,钢镀锌 Steel,Zinc plated 0.8N.m/7Lb.In | | | M4,钢镀锌 Steel,Ni plated 1.5N.m/12.6Lb.In | | |
| 使用温度 Ambient temperature | -40~125°C | | | -40~125°C | | | -40~125°C | | |
| 极数 Poles | 1-21 | | | 1-16 | | | 1-16 | | |
| 产品尺寸图 Panel cutout | | | | | | | | | |

额定电流 Rated current: 115A/150A/200A



DG100-A 间距 Pitch:21mm



DG150-A 间距 Pitch:27mm



DG200-A 间距 Pitch:27mm

| 类别 Category | DG100-A | | | DG150-A | DG200-A |
|-------------------------------|---|-----|-----|---|---|
| | B | C | D | E | E |
| 使用级别 Use group | B | C | D | E | E |
| 电压(V) Rated voltage | 600 | 600 | 600 | 1000 | 1000 |
| 电流(A) Rated current | 115 | 115 | 5 | 150 | 200 |
| 线径(AWG) Wire range | 10-2 | | | 6-1/0 | 6-3/0 |
| 耐电压 Withstanding voltage | AC2200V/1Min | | | AC3000V/1Min | AC3000V/1Min |
| 绝缘阻抗 Insulation resistance | 500MΩ/DC500V | | | 500MΩ/DC500V | 500MΩ/DC500V |
| 塑件 Housing | PBT+GF,UL94V-0 | | | PA66+GF,UL94V-0 | PA66+GF,UL94V-0 |
| 端子 Terminal | 铜合金,镀镍 Copper alloy,Ni plated | | | 铜合金,镀镍 Copper alloy,Ni plated | 铜合金,镀镍 Copper alloy,Ni plated |
| 螺丝 Screws | M6,钢镀锌 Steel,Ni plated 5.0N.m/44.3Lb.In | | | M8,钢镀锌 Steel,Zinc plated 6.0N.m/53Lb.In | M8,钢镀锌 Steel,Zinc plated 6.0N.m/53Lb.In |
| 使用温度 Ambient temperature | -40~120°C | | | -40~120°C | -40~120°C |
| 极数 Poles | 1-10 | | | 2-8 | 2-8 |
| 产品尺寸图 Panel cutout | | | | | |

额定电流 Rated current: 60A/30A/130A



DGR40 规格: 铝轨
Type: Al rail



DGR60 规格: 钢轨, 面板
Type: Steel rail, Panel



DGR100 规格: 钢轨, 面板
Type: Steel rail, Panel

| 类别 Category | DGR40 | | | DGR60 | | | DGR100 | | |
|-------------------------------|---|-----|-----|---|-----|-----|---|-----|-----|
| | B | C | D | B | C | D | B | C | D |
| 使用级别 Use group | B | C | D | B | C | D | B | C | D |
| 电压(V) Rated voltage | 600 | 600 | 600 | 600 | 600 | 600 | 600 | 600 | 600 |
| 电流(A) Rated current | 60 | 60 | 5 | 80 | 80 | 5 | 130 | 130 | 5 |
| 线径(AWG) Wire range | 22-6 | | | 20-4 | | | 20-1 | | |
| 耐电压 Withstanding voltage | AC2200V/1Min | | | AC2200V/1Min | | | AC2200V/1Min | | |
| 绝缘阻抗 Insulation resistance | 500MΩ/DC500V | | | 500MΩ/DC500V | | | 500MΩ/DC500V | | |
| 塑件 Housing | PC,UL94V-0 | | | PC,UL94V-0 | | | PC,UL94V-0 | | |
| 端子 Terminal | 铜合金,镀镍 Copper alloy,Ni plated | | | 铜合金,镀镍 Copper alloy,Ni plated | | | 铜合金,镀镍 Copper alloy,Ni plated | | |
| 螺丝 Screws | M5,钢镀锌 Steel,Zinc plated 2.8N.m/25Lb.In | | | M6,钢镀锌 Steel,Zinc plated 4.4N.m/40Lb.In | | | M8,钢镀锌 Steel,Zinc plated 6.7N.m/60Lb.In | | |
| 使用温度 Ambient temperature | -40~125°C | | | -40~125°C | | | -40~125°C | | |
| 极数 Poles | 1-16 | | | 1-16 | | | 1-16 | | |
| 产品尺寸图 Panel cutout | | | | | | | | | |

额定电流 Rated current: 155A/200A/240A



DGR150 规格: 钢轨, 面板
Type: Steel rail, Panel



DGR200 规格: 铝轨, 面板
Type: Al rail, Panel



DGR240 规格: 铝轨
Type: Al rail

| 类别 Category | DGR150 | | | DGR200 | | | DGR240 | | |
|-------------------------------|---|-----|-----|--|-----|-----|--|-----|-----|
| | B | C | D | B | C | D | B | C | D |
| 使用级别 Use group | B | C | D | B | C | D | B | C | D |
| 电压(V) Rated voltage | 600 | 600 | 600 | 600 | 600 | 600 | 600 | 600 | 600 |
| 电流(A) Rated current | 155 | 155 | 5 | 200 | 200 | 5 | 240 | 240 | 5 |
| 线径(AWG) Wire range | 20-2/0 | | | 20-4/0 | | | 4-250Kcmil | | |
| 耐电压 Withstanding voltage | AC2200V/1Min | | | AC2200V/1Min | | | AC2200V/1Min | | |
| 绝缘阻抗 Insulation resistance | 500MΩ/DC500V | | | 500MΩ/DC500V | | | 500MΩ/DC500V | | |
| 塑件 Housing | PC, UL94V-0 | | | PC, UL94V-0 | | | PC, UL94V-0 | | |
| 端子 Terminal | 铜合金, 镀镍 Copper alloy, Ni plated | | | 铜合金, 镀镍 Copper alloy, Ni plated | | | 铜合金, 镀镍 Copper alloy, Ni plated | | |
| 螺丝 Screws | M8, 钢镀锌 Steel, Zinc plated 4.5N.m/40Lb.In | | | M10, 钢镀锌 Steel, Zinc plated 9.0N.m/80Lb.In | | | M10, 钢镀锌 Steel, Zinc plated 4.0N.m/35.5Lb.In | | |
| 使用温度 Ambient temperature | -40~125°C | | | -40~125°C | | | -40~125°C | | |
| 极数 Poles | 1-12 | | | 1-11 | | | 1-16 | | |
| 产品尺寸图 Panel cutout | | | | | | | | | |

额定电流 Rated current: 300A/500A



DGR300 规格: 钢轨, 面板
Type: Steel rail, Panel



DGR500 规格: 面板
Type: Panel

| 类别 Category | DGR300 | | | DGR500 | | |
|-------------------------------|--|-----|-----|--|-----|-----|
| | B | C | D | B | C | D |
| 使用级别 Use group | B | C | D | B | C | D |
| 电压(V) Rated voltage | 600 | 600 | 600 | 600 | 600 | 300 |
| 电流(A) Rated current | 300 | 300 | 5 | 500 | 500 | 5 |
| 线径(AWG) Wire range | 20-300Kcmil | | | 300-750Kcmil | | |
| 耐电压 Withstanding voltage | AC2200V/1Min | | | AC2200V/1Min | | |
| 绝缘阻抗 Insulation resistance | 500MΩ/DC500V | | | 500MΩ/DC500V | | |
| 塑件 Housing | PC, UL94V-0 | | | PC, UL94V-0 | | |
| 端子 Terminal | 铜合金, 镀镍 Copper alloy, Ni plated | | | 铜合金, 镀镍 Copper alloy, Ni plated | | |
| 螺丝 Screws | M10, 钢镀锌 Steel, Zinc plated 9.0N.m/80Lb.In | | | M16, 钢镀锌 Steel, Zinc plated 24.0N.m/213Lb.In | | |
| 使用温度 Ambient temperature | -40~125°C | | | -40~125°C | | |
| 极数 Poles | 1-16 | | | 1-16 | | |
| 产品尺寸图 Panel cutout | | | | | | |

额定电流 Rated current: 130A



DGB40



DGB100

| 类别 Category | DG78 | | |
|-------------------------------|--|---|-----|
| | B | C | D |
| 使用级别 Use group | B | C | D |
| 电压(V) Rated voltage | 600 | - | 600 |
| 电流(A) Rated current | - | - | - |
| 线径(AWG) Wire range | / | | |
| 耐电压 Withstanding voltage | AC2200V/1Min | | |
| 绝缘阻抗 Insulation resistance | 500MΩ/DC500V | | |
| 塑件 Housing | PC, UL94V-0 | | |
| 端子 Terminal | / | | |
| 螺丝 Screws | M12, 钢镀锌 Steel, Zinc plated 40N.m/354.2Lb.In | | |
| 使用温度 Ambient temperature | -40~125°C | | |
| 极数 Poles | 2 | | |
| 产品尺寸图 Panel cutout | | | |

| 类别 Category | DG78 | | |
|-------------------------------|---|-----|---|
| | B | C | D |
| 使用级别 Use group | B | C | D |
| 电压(V) Rated voltage | 600 | 600 | - |
| 电流(A) Rated current | 130 | 130 | - |
| 线径(AWG) Wire range | 20-1 | | |
| 耐电压 Withstanding voltage | AC2200V/1Min | | |
| 绝缘阻抗 Insulation resistance | 500MΩ/DC500V | | |
| 塑件 Housing | PC, UL94V-0 | | |
| 端子 Terminal | / | | |
| 螺丝 Screws | M8, 钢镀锌 Steel, Zinc plated 6.8N.m/60Lb.In | | |
| 使用温度 Ambient temperature | -40~125°C | | |
| 极数 Poles | 2-11 | | |
| 产品尺寸图 Panel cutout | | | |

额定电流 Rated current: 60A



DG97-A

| 类别 Category | DG97-A | | |
|-------------------------------|---|-----|-----|
| 使用级别 Use group | B | C | D |
| 电压(V) Rated voltage | 300 | 300 | 300 |
| 电流(A) Rated current | 60 | 60 | 10 |
| 线径(AWG) Wire range | 20-1 | | |
| 耐电压 Withstanding voltage | AC1600V/1Min | | |
| 绝缘阻抗 Insulation resistance | 500MΩ/DC500V | | |
| 塑件 Housing | PC,UL94V-0 | | |
| 端子 Terminal | 铜合金, 镀锡 Copper alloy, Tin plated | | |
| 螺丝 Screws | M6, 钢镀锌 Steel, Zinc plated 3.0N.m/26.6Lb.In | | |
| 使用温度 Ambient temperature | -40~80°C | | |
| 极数 Poles | 12 | | |
| 产品尺寸图 Panel cutout | | | |

额定电流 Rated current: 130A



DG32-A

| 类别 Category | DG32-A | | |
|-------------------------------|---|-----|---|
| 使用级别 Use group | B | C | D |
| 电压(V) Rated voltage | 600 | 600 | - |
| 电流(A) Rated current | 130 | 130 | - |
| 线径(AWG) Wire range | 20-1 | | |
| 耐电压 Withstanding voltage | AC2200V/1Min | | |
| 绝缘阻抗 Insulation resistance | 500MΩ/DC500V | | |
| 塑件 Housing | PC,UL94V-0 | | |
| 端子 Terminal | / | | |
| 螺丝 Screws | M8, 钢镀锌 Steel, Zinc plated 6.8N.m/60Lb.In | | |
| 使用温度 Ambient temperature | -40~125°C | | |
| 极数 Poles | 2-11 | | |
| 产品尺寸图 Panel cutout | | | |

应用领域

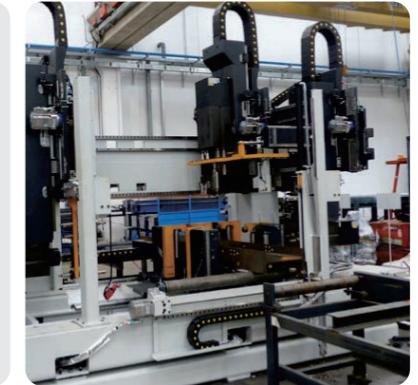
DEGSON高松连接器广泛用于机器人、工业自动化、数控设备、纺织机械、轨道交通、监控设备、能源、通讯等各种需要电力、数据和信号连接的设备中。

FIELD OF APPLICATION

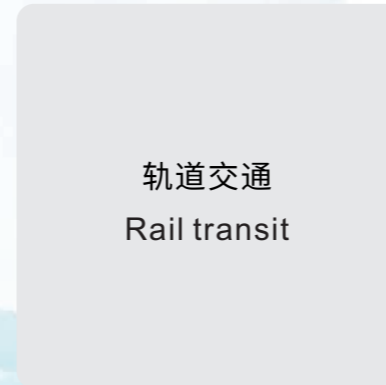
DEGSON connectors are widely used in robot, industrial automation, CNC equipment, textile machinery, rail transit, monitor and control unit, energy, communicate and so on various equipments requiring electrical, date and signal connection.



交通技术
Transportation technology



数控设备
CNC equipment



轨道交通
Rail transit



工业自动化
Industrial automation



机器人
Robot



能源
Energy



监控设备
Monitor and control unit



通讯
Communicate

