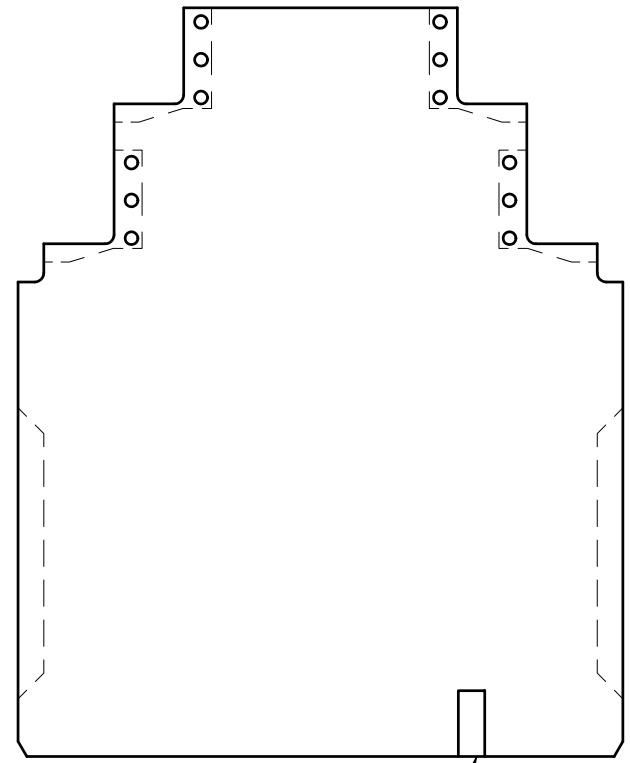
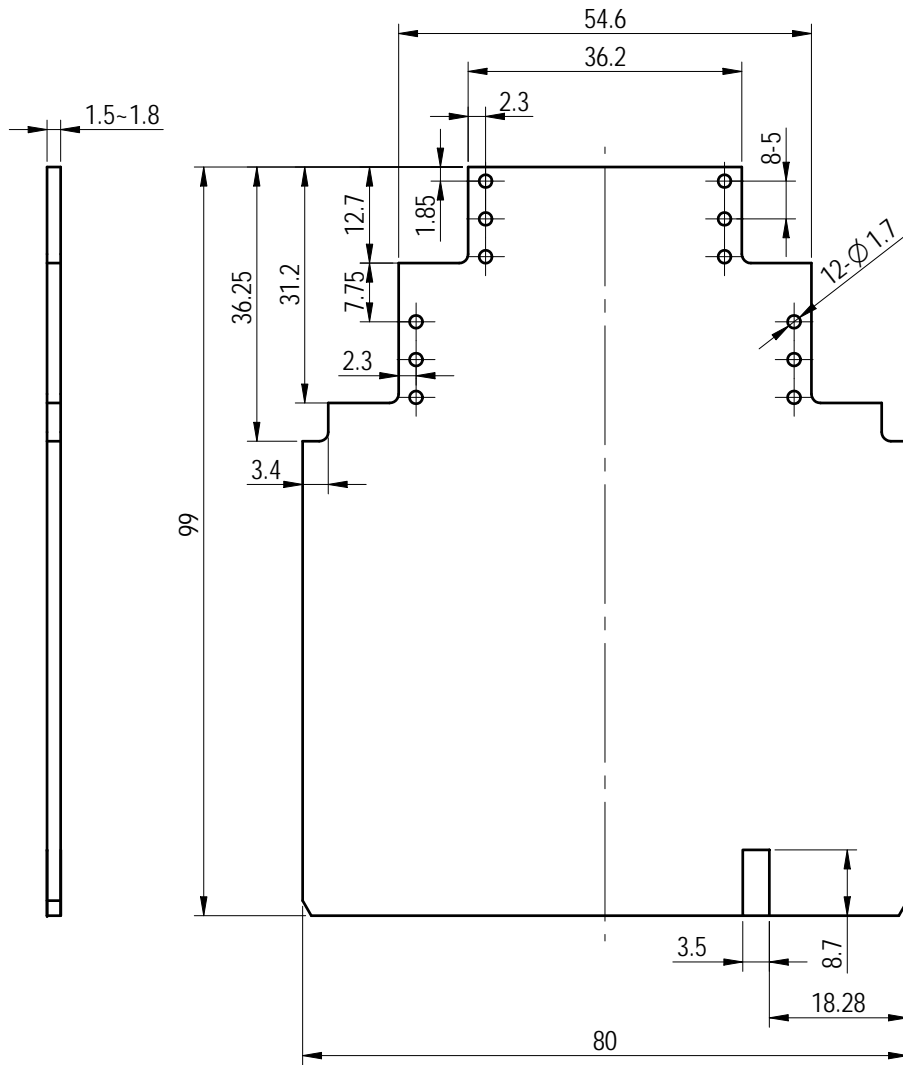


未注公差/General tolerances(mm)											0.05/10			
0 ~ 3	>3 ~ 6	>6 ~ 10	>10 ~ 18	>18 ~ 30	>30 ~ 50	>50 ~ 80	>80 ~ 120	>120 ~ 180	>180 ~ 250	>250 ~ 315		>315 ~ 400	>400 ~ 500	>500
±0.08	±0.12	±0.18	±0.22	±0.26	±0.31	±0.37	±0.57	±0.80	±0.93	±1.05	±1.15	±1.60	±2.20	±1°



--- : 端子及散热孔投影
 --- : projection of the terminals & louver

		MATERIAL:		SURFACE/COLOR:	
		MAT NO./REV:		MAT STATUS:	
APPD: 李根芳	2022.05.30	NAME			
CHKD: 马恩升	2022.05.30	FMET-06P-00AH-PCB			
DRFT: 谢志鹏	2022.05.27				
DRAWING NO.	TYPE	DRAWING STATUS	SCALE	SHEET	
/	PCB DRAWING	work	1:1	1/1	

REV	ECN	DESCRIPTION	DRFT	DATE

Transfer or duplication of this document as well as the utilization or communication of its contents are prohibited unless authorized in writing by Degson. All rights reserved for patent. 除专利权明确授权外，否则禁止转让、复制、引用、或对本文件内容进行修改、复制或传播。未经公司书面授权，不得复制或传播。 公司保留对本文件的所有权利。

A
B
C
D